



# mHealth + eHealth = meHealth

Supporting person-centric care in low and middle income countries (LMIC)  
using an open source health information exchange: **OpenHIE**

Co-presenters:

Derek Ritz & Justin Fyfe

ecGroup Inc.



# Overview

- Introductions
- The arc of the OpenHIE story
- An implementation example: the TZ “BID” project
- What’s next for OpenHIE?



# Your co-presenters



**Derek Ritz** 1st  
Principal Consultant, ecGroup Inc.  
Toronto, Canada Area | Information Technology and Services

Current ecGroup Inc., The University of Edinburgh, ISO TC215  
Previous Université de Sherbrooke, Canada Health Infoway Standards Collaborative, MARC HI  
Education The University of Edinburgh

[Send a message](#) 500+ connections

<https://ca.linkedin.com/in/derekritz> [Contact Info](#)

**Background**

**Summary**

Trusted advisor to global public and private sector clients regarding m/eHealth architecture, strategy, implementation and adoption.

Specialties: eHealth technology & strategy, health enterprise architecture, big data analytics, health informatics standards, lean healthcare, patient safety & quality of care, EHR implementation, security, privacy, supply chain management (SCM), BPR, IT systems analysis, SOA

**Justin Fyfe** 1st  
Technical Consultant at ecGroup Inc.  
Hamilton, Ontario, Canada | Information Technology and Services

Current ecGroup Inc.  
Previous Mohawk College  
Education Mohawk College

[Send a message](#) [Endorse](#) 249 connections

**Background**

**Summary**

- Architect & Lead Developer : MARC-HI Everest Framework
- Lead Developer : MARC-HI RFC3881 Visualizer
- Lead Developer : MARC-HI EHRs Reference Implementation
- Architect & Lead Developer : MARC-HI HL7v3 Shared Health Record Reference Implementation

Specialties: Systems architecture, software development, rapid prototyping



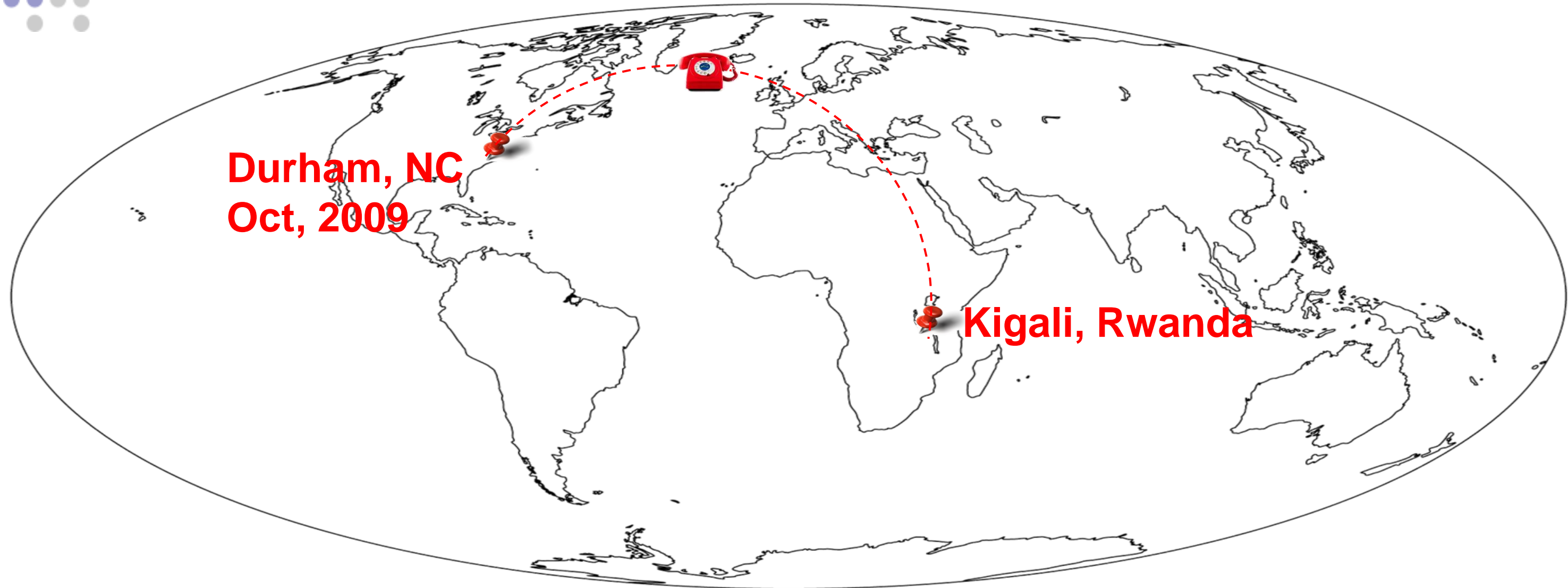


This story is about Mosa...





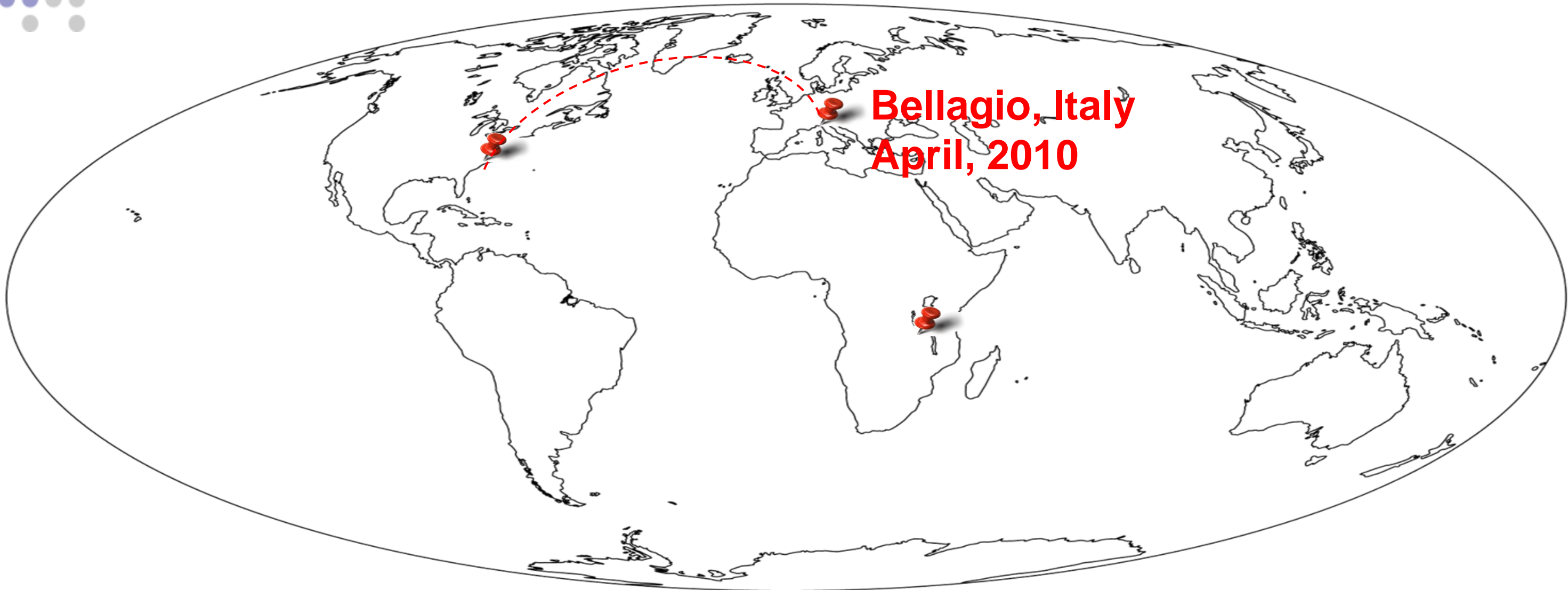
**Durham, NC**  
**Oct, 2009**



**Durham, NC**  
**Oct, 2009**

**Kigali, Rwanda**



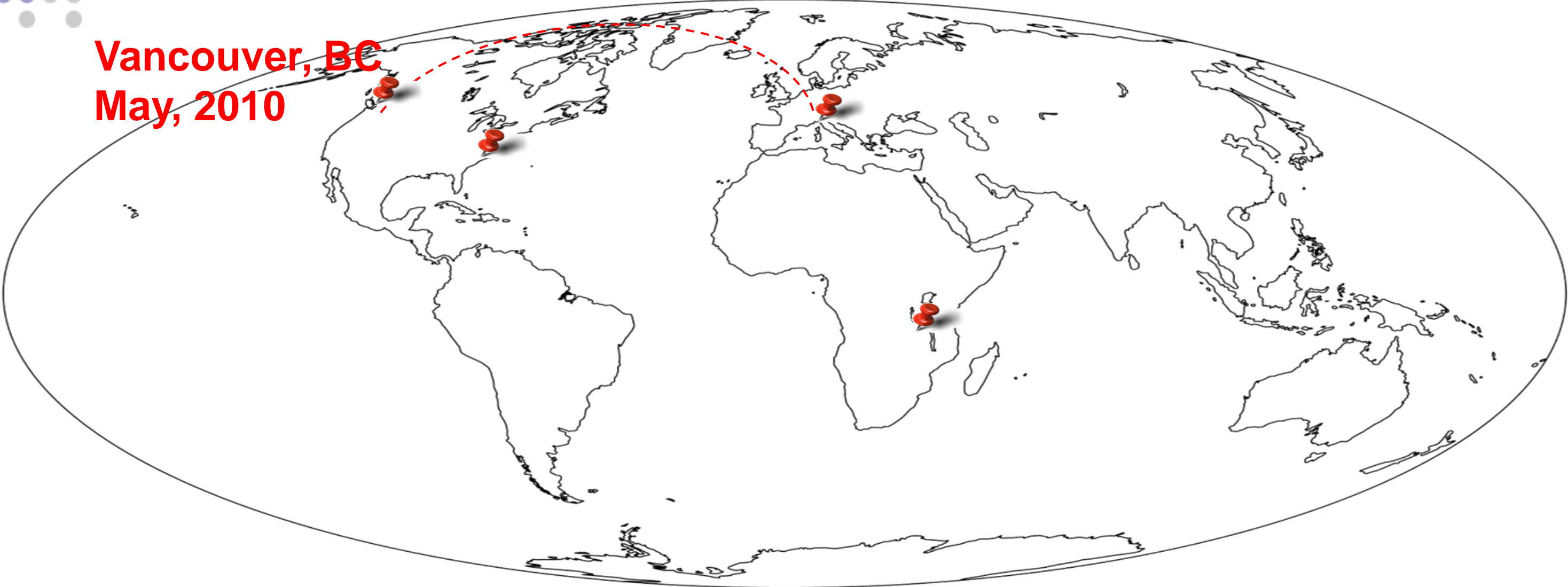






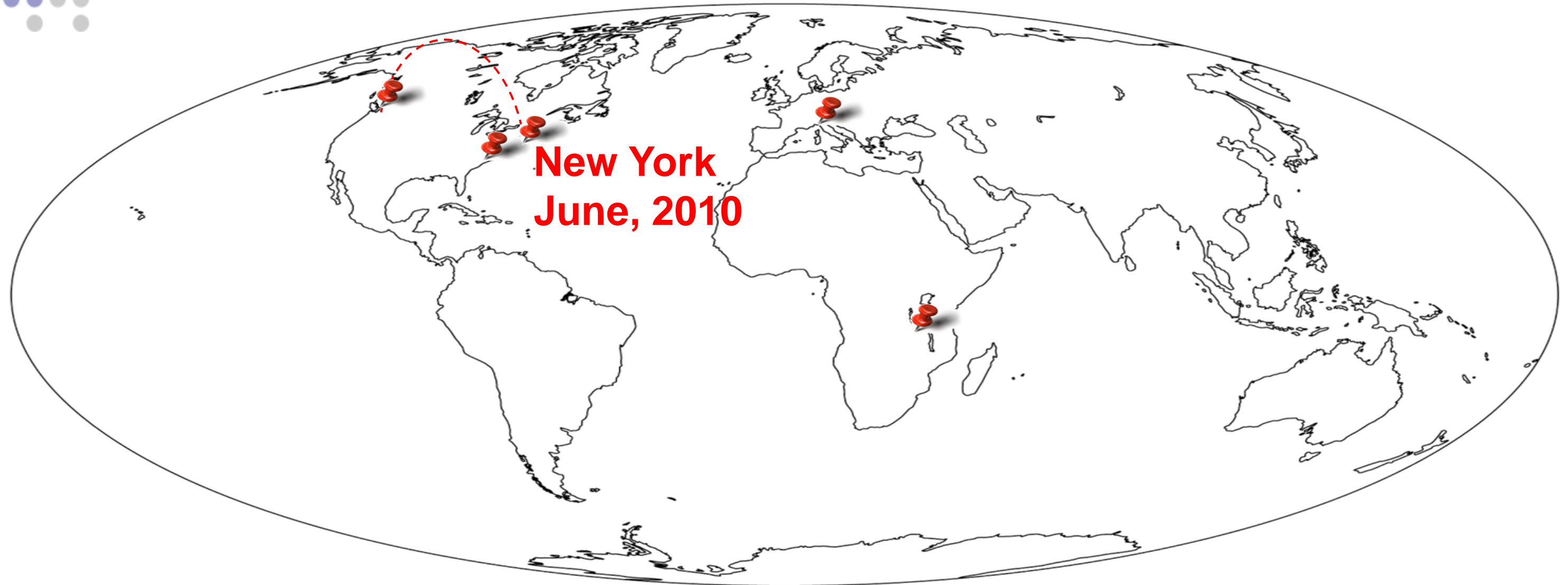
IDRC  CRDI

**Vancouver, BC**  
**May, 2010**





IDRC  CRDI



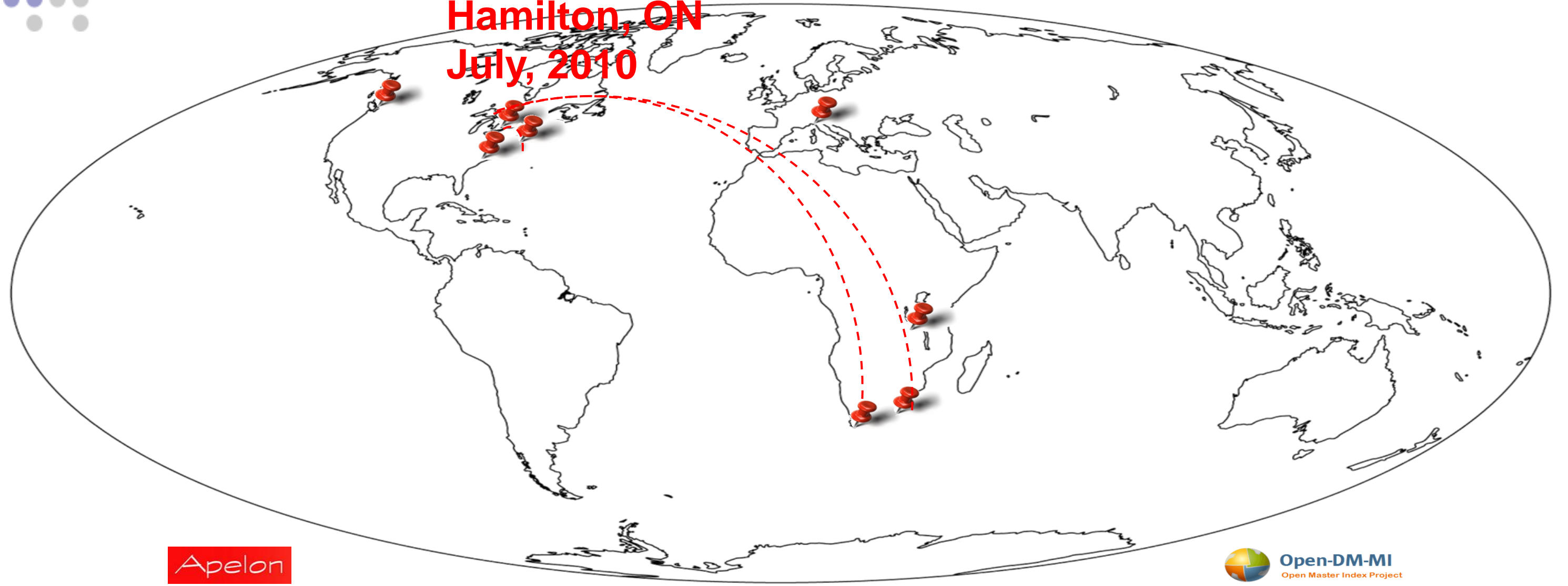
New York  
June, 2010





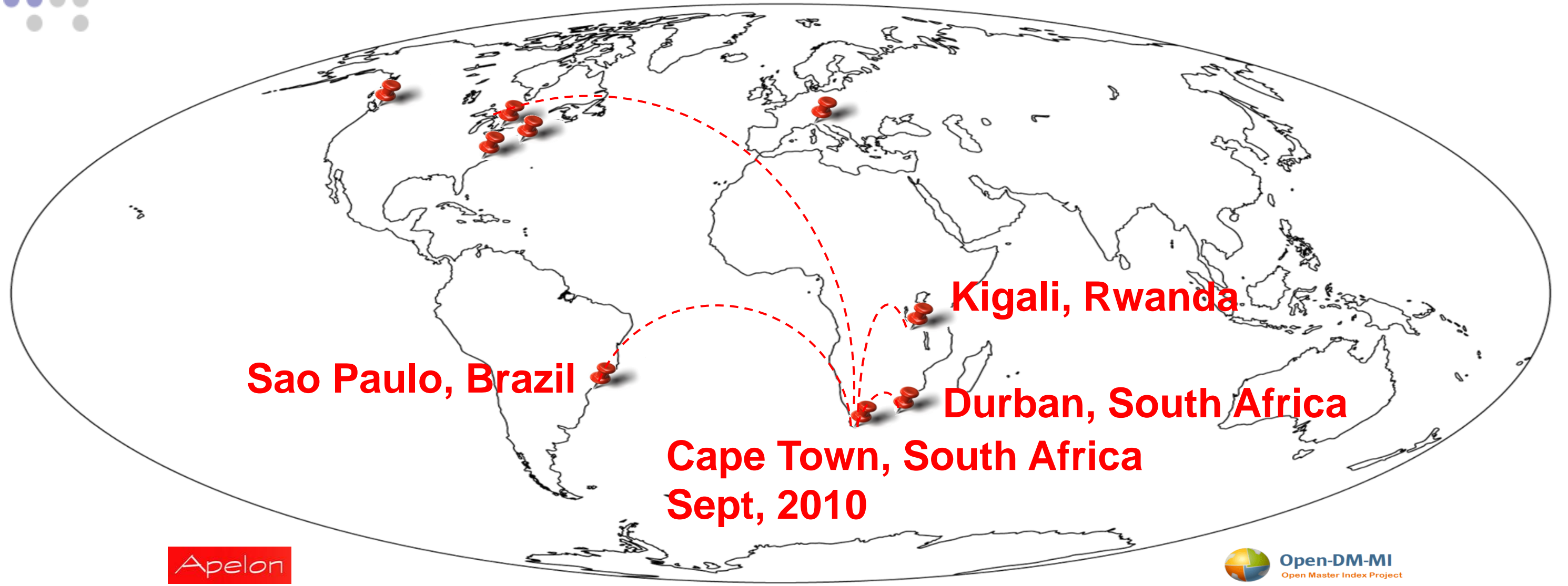
IDRC  CRDI

**Hamilton, ON  
July, 2010**



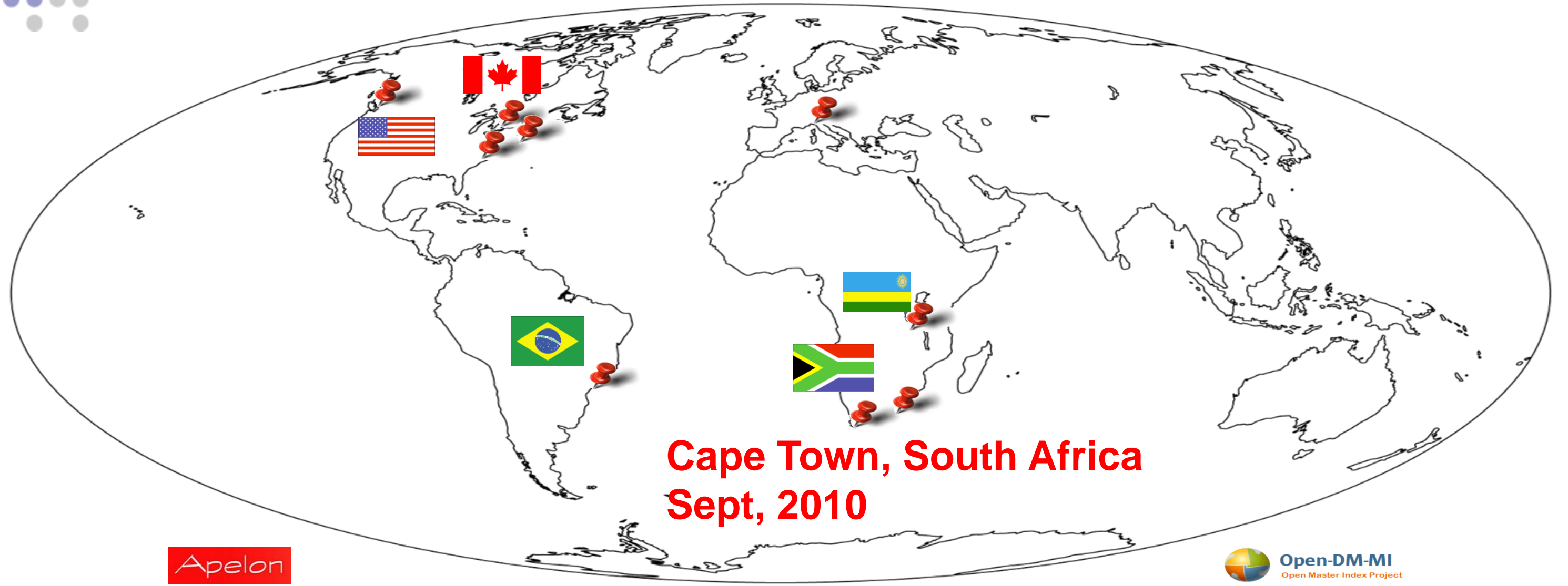


IDRC  CRDI 





IDRC  CRDI 



**Cape Town, South Africa  
Sept, 2010**

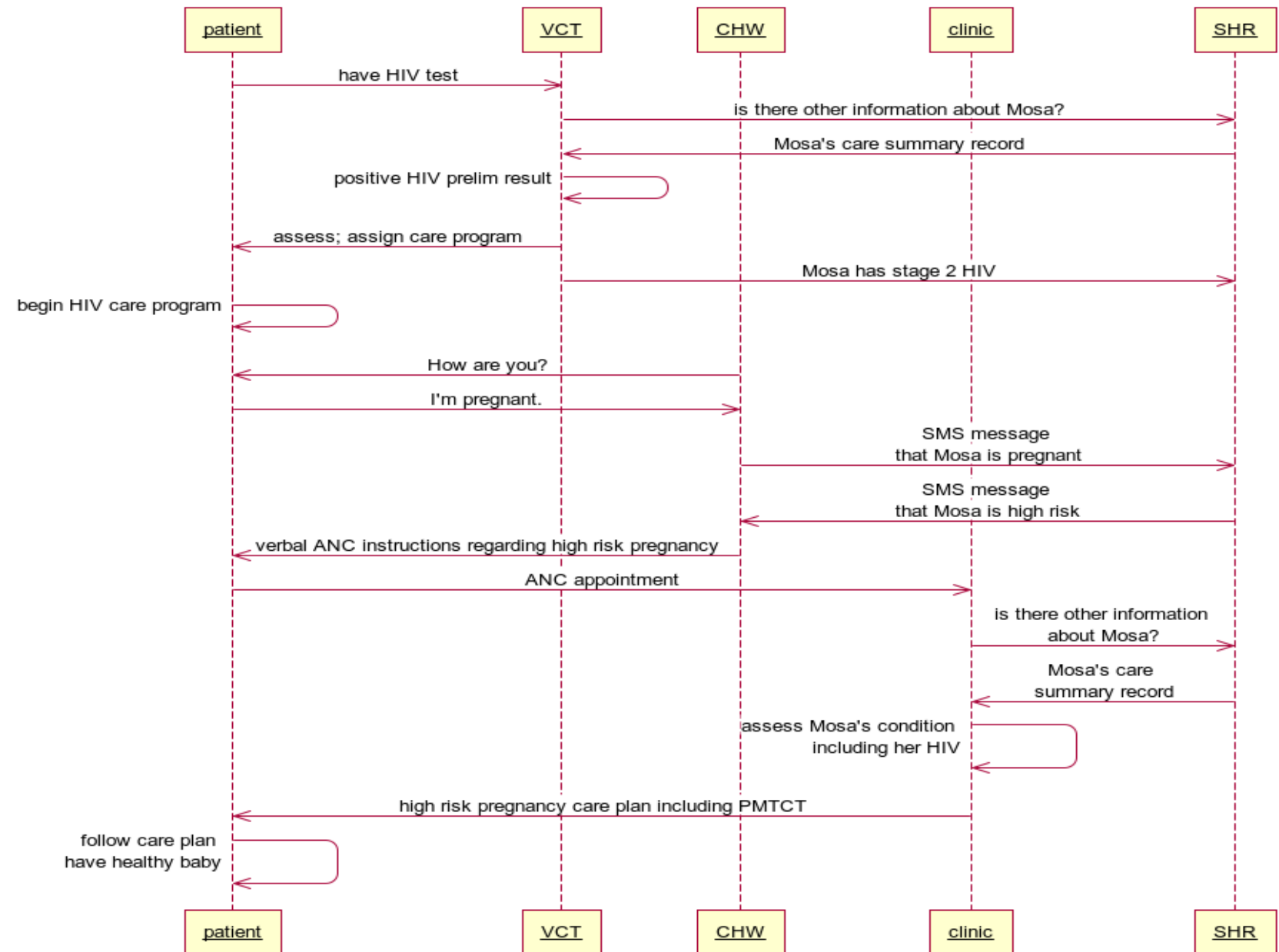




At the 2010 Medinfo Conference in Cape Town, we demonstrated how meHealth architecture could impact the life of Mosa and her baby.



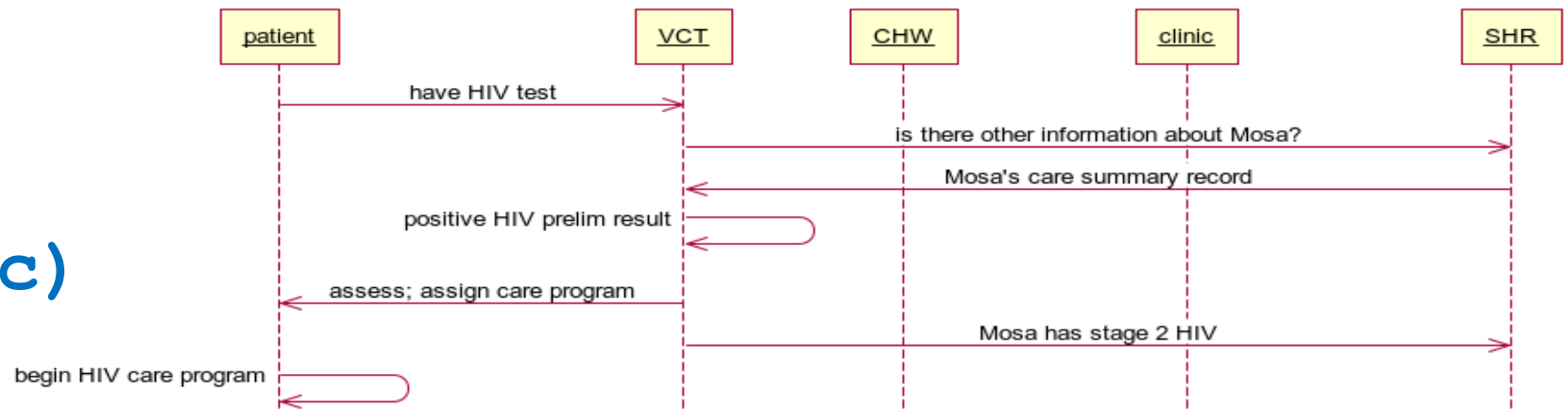
# Workflow for Mosa's Story



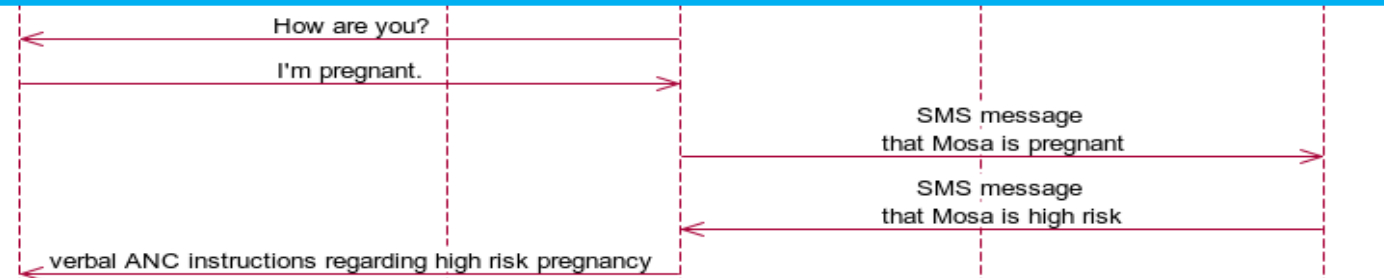


# Workflow for Mosa's Story

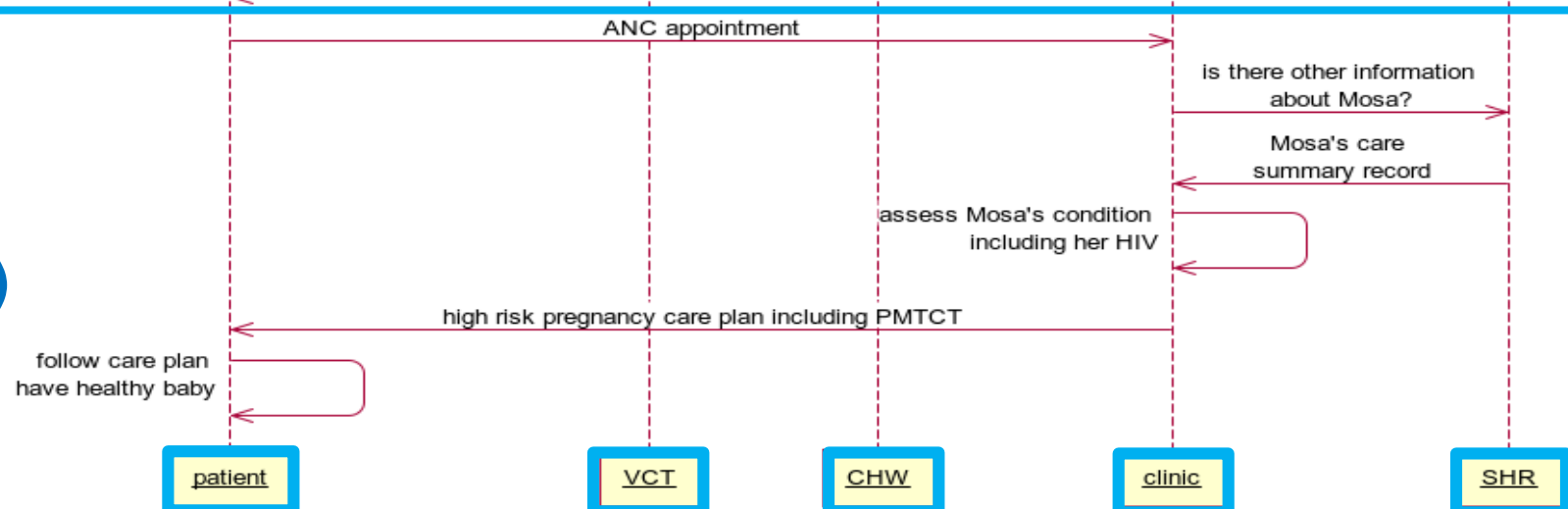
## Act I (VCT clinic)



## Act II (Village)



## Act III (ANC clinic)

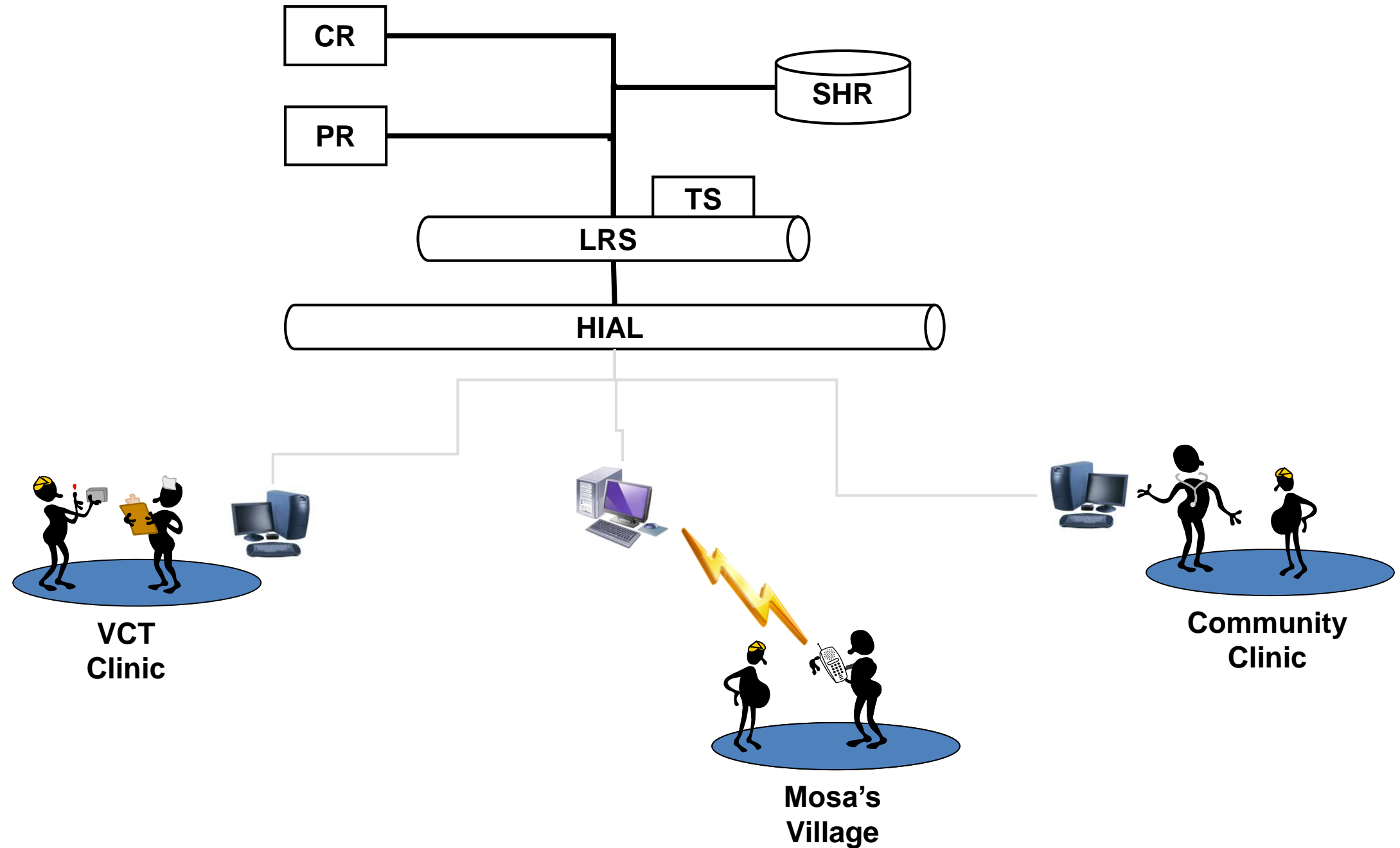


Participants



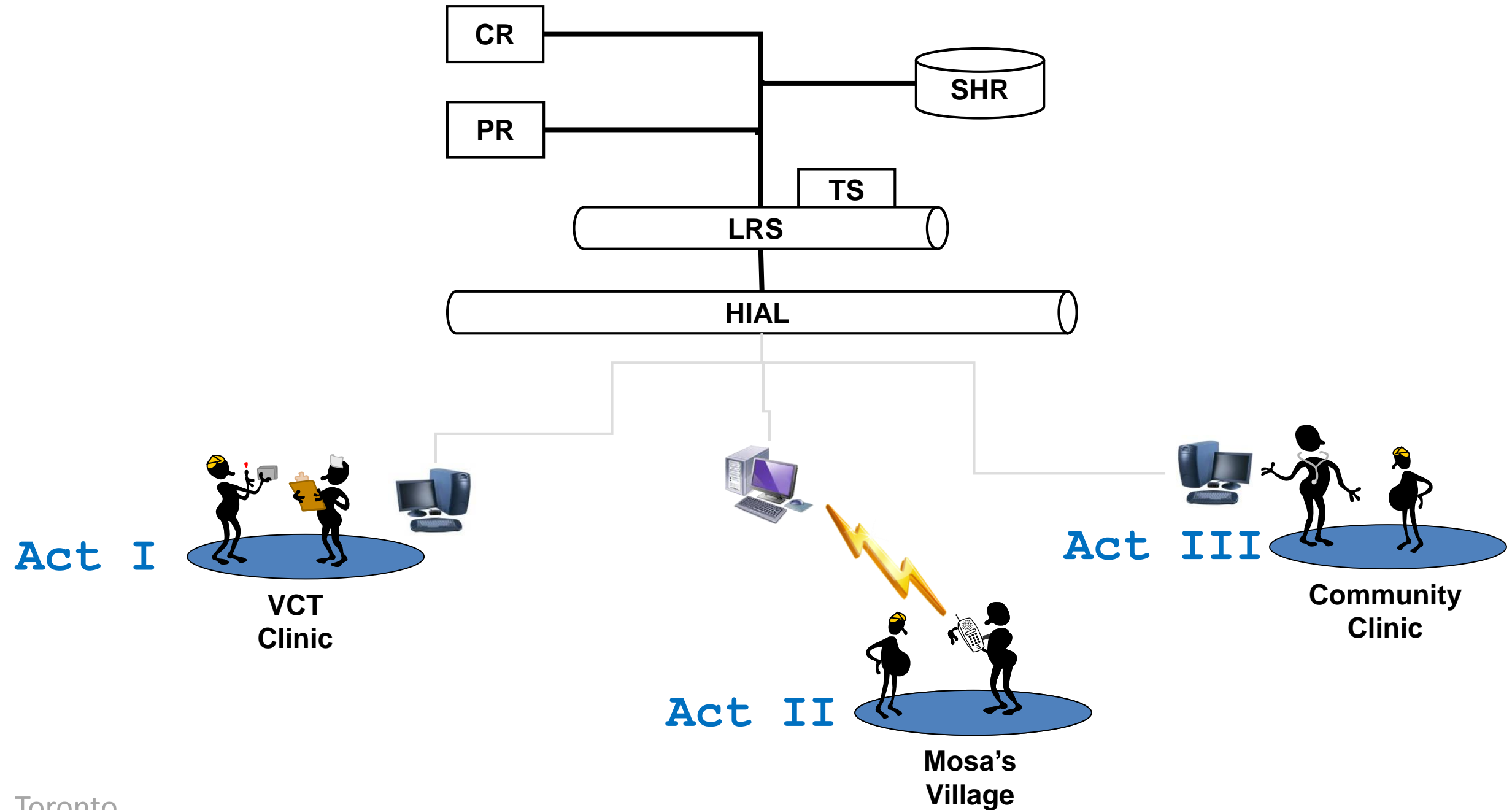


# Architectural components



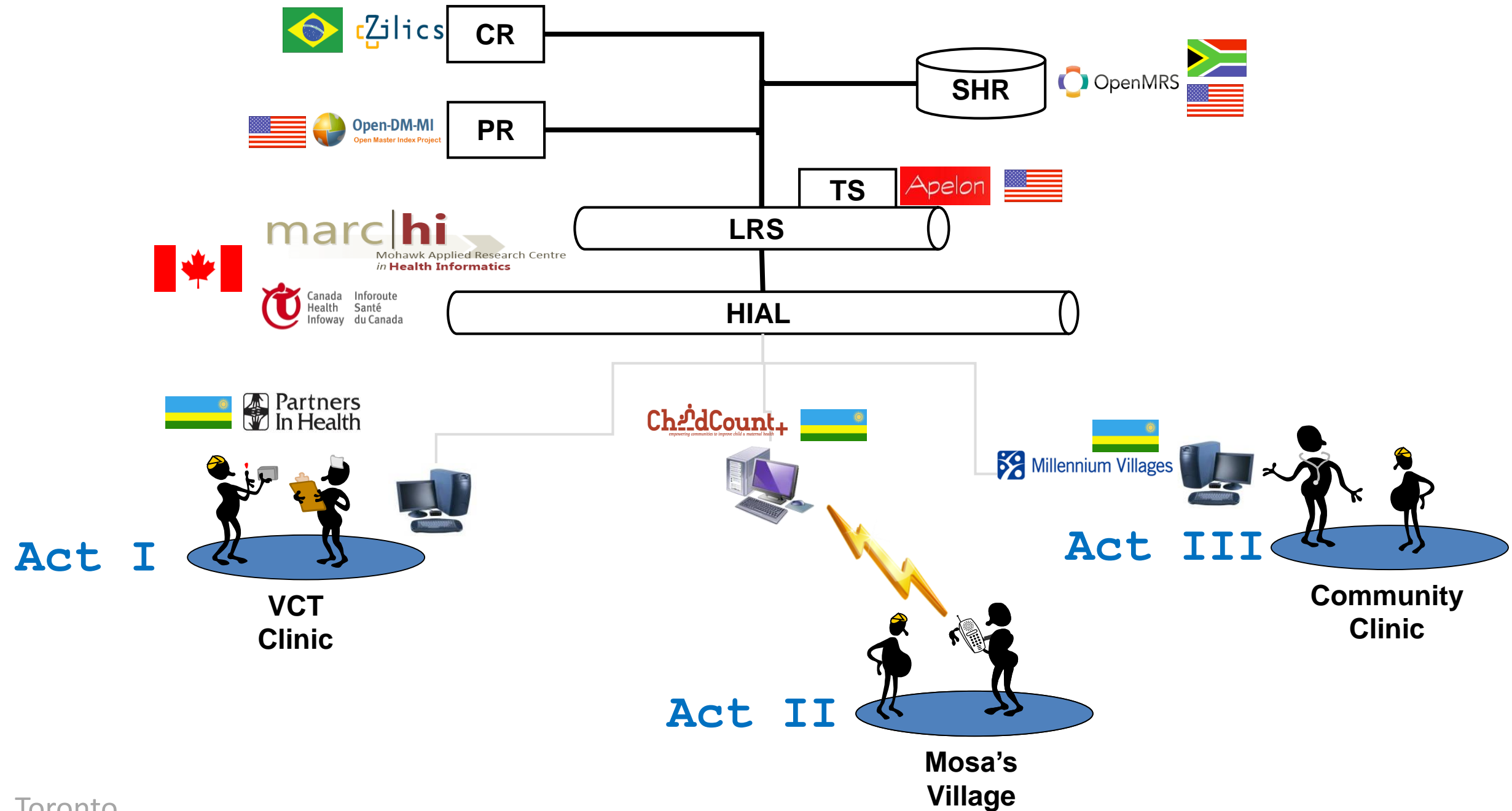


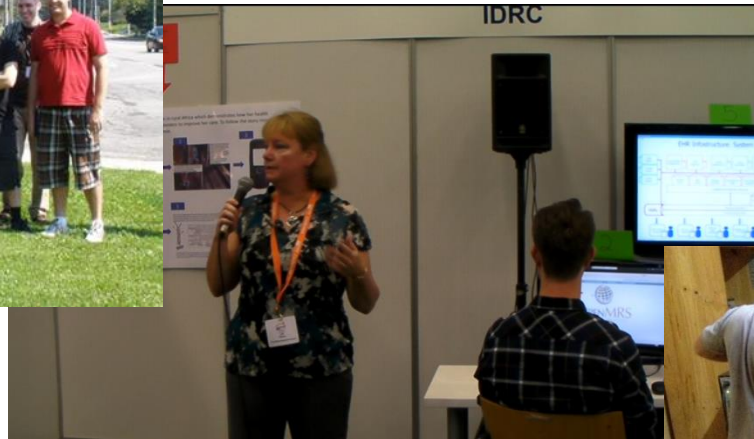
# Architectural components





# Technologies







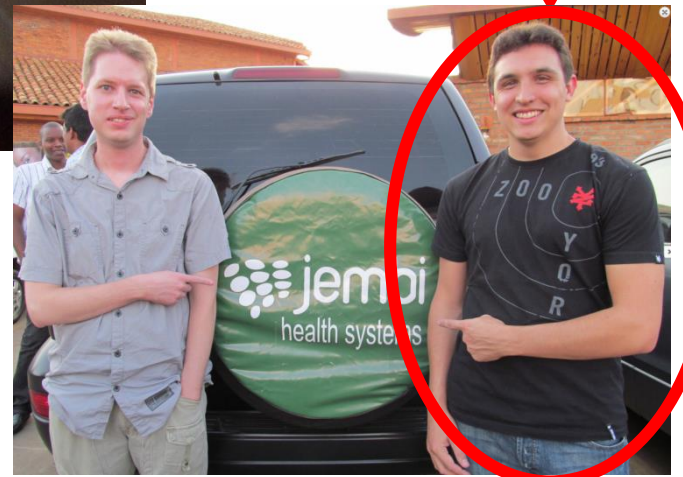
2010



REACH



2012



RHIE



2010



REACH



2012



RHIE



# OpenHIE!



- ❑ In September, 2012 the OpenHIE initiative was launched in Kigali, Rwanda
- ❑ OpenHIE leveraged RHIE as a *running start*
- ❑ 2013 was OpenHIE’s “year of engineering” as standards-based eHealth profiles were selected (or developed)
- ❑ 2014 was the “year of construction” as open source reference implementations were built



# OpenHIE and

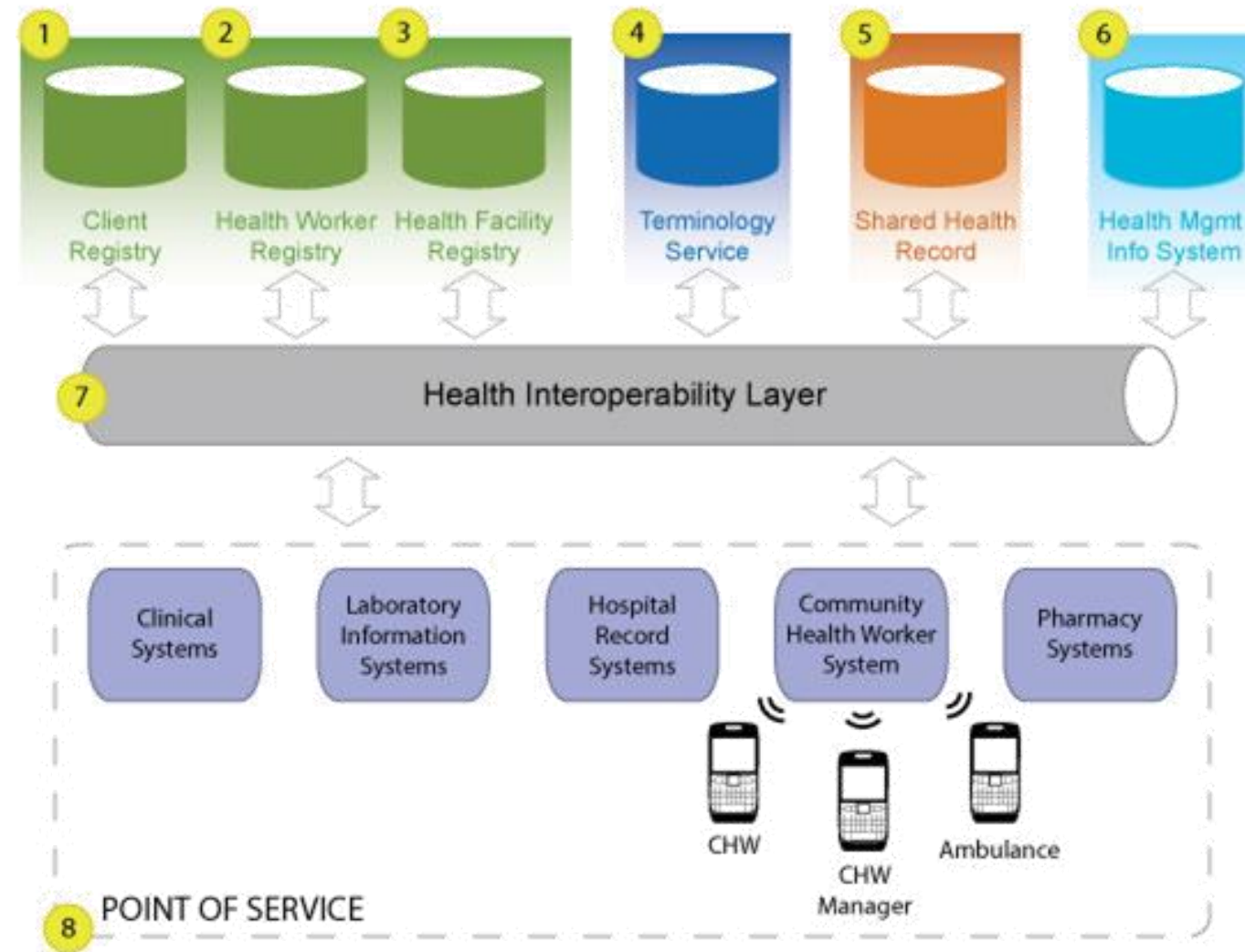


- OpenHIE leverages IHE profiles for all eHealth system interactions
- Community members are active in IHE profile development:
  - Care Services Discovery (**CSD**)
  - Patient Demographic Query for Mobile (**PDQm**)
  - Aggregate Data Exchange (**\*ADX**)
  - mobile Alert Communication Management (**\*mACM**)



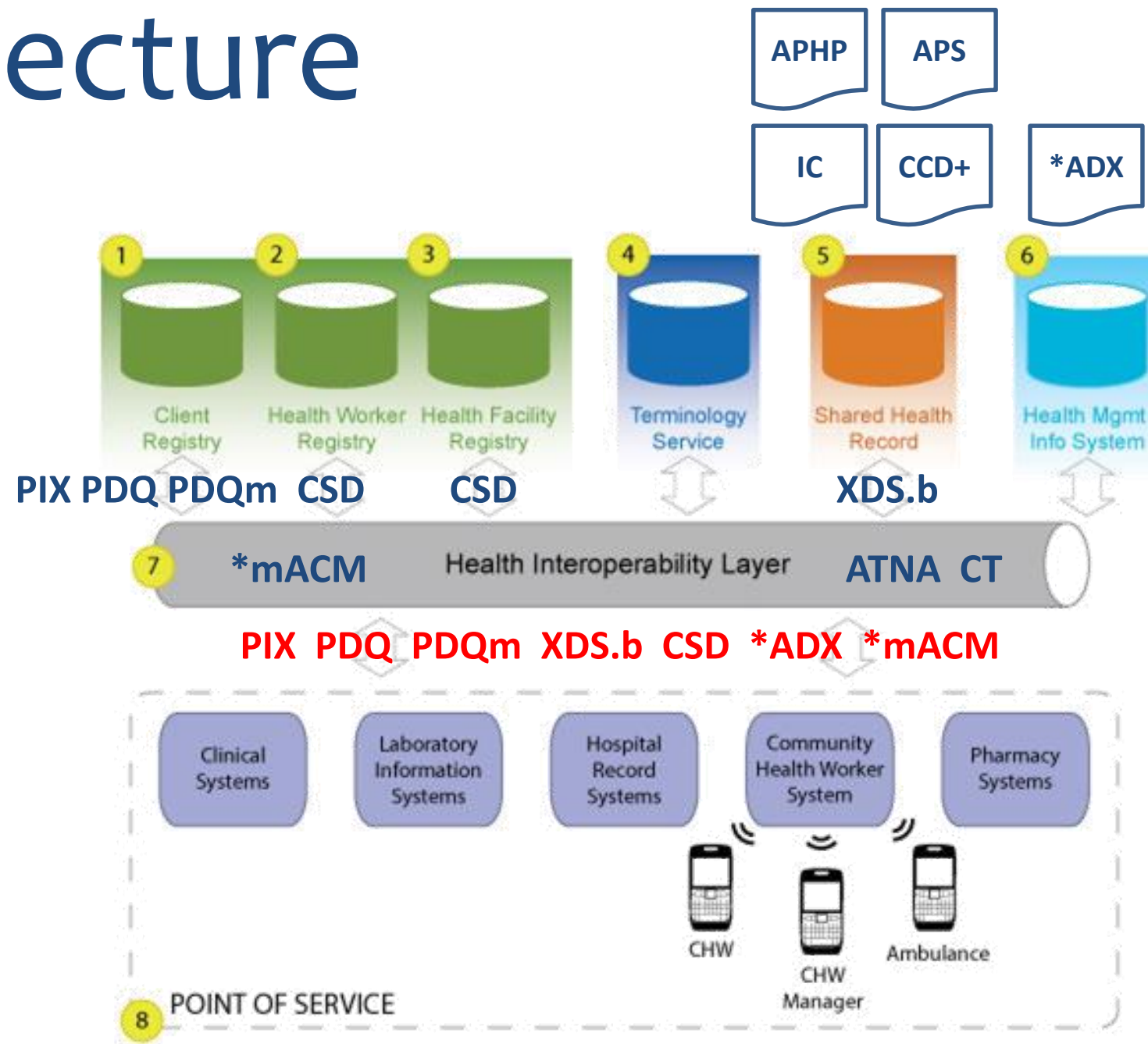


# Architecture





# Architecture





2015 marks OpenHIE's first  
“year of implementation”.





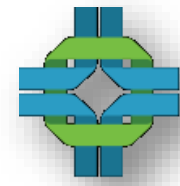
# OpenHIE

## OpenHIE is a Global Mission-Driven Community of Practice

Dedicated to improve the health of the underserved through open and collaborative, development and support of country driven, large scale health information sharing architectures.

- Enabling large scale health information interoperability
- Offering freely available standards-based approaches and reference technologies
- Supporting each other's needs through peer technical assistance communities

[www.ohie.org](http://www.ohie.org)



# OpenHIE

## OpenHIE is a Global Mission-Driven Community of Practice

Dedicated to improve the health of the underserved through open and collaborative, development and support of country driven, large scale health information sharing architectures.

- Enabling large scale health information interoperability
- Offering freely available standards-based approaches and reference technologies
- Supporting each other's needs through peer technical assistance communities

[www.ohie.org](http://www.ohie.org)



# Better Immunization Data (BID)



BETTER IMMUNIZATION DATA

INITIATIVE

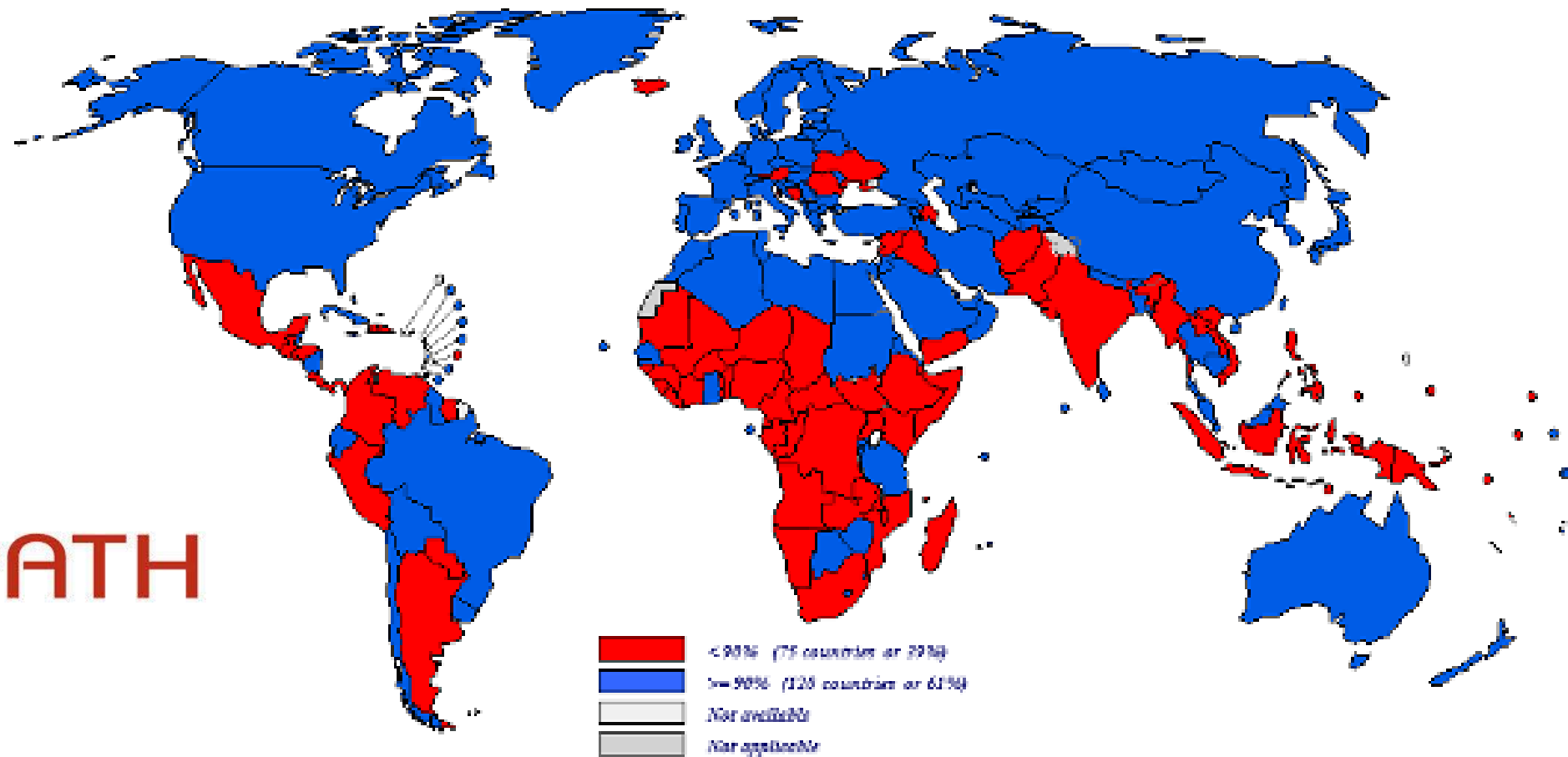
Led by PATH and funded by the Bill & Melinda Gates Foundation, the Better Immunization Data (BID) Initiative is grounded in the belief that **better data**, plus **better decisions**, will lead to **better health outcomes**.

Its vision is to empower countries to enhance immunization and overall health service delivery through improved data collection, quality, and use.





# Better Immunization Data (BID)





# Better Immunization Data (BID)



BETTER IMMUNIZATION DATA  
INITIATIVE



## Tanzanian National Immunization Registry







# Better Immunization Data (BID)

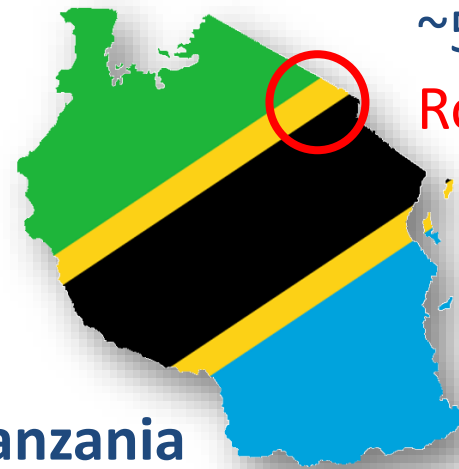
## Arusha Region

1.7M population

~260 immunization clinics

~55,000 babies born annually

**Rollout started beginning of May!**



## Tanzania

57M population

~6600 immunization clinics

~2M babies born annually

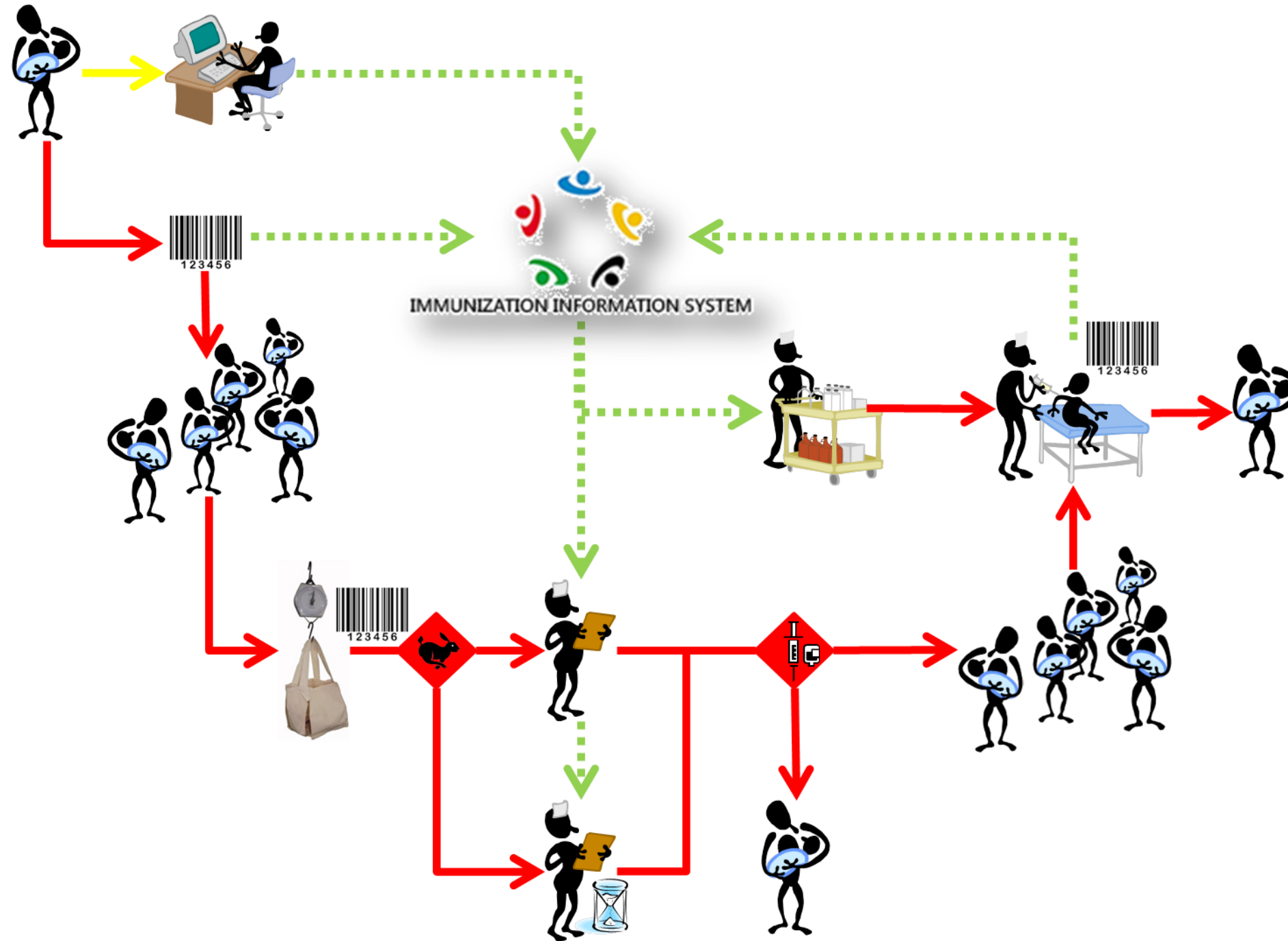
**Nationwide rollout 2016+**

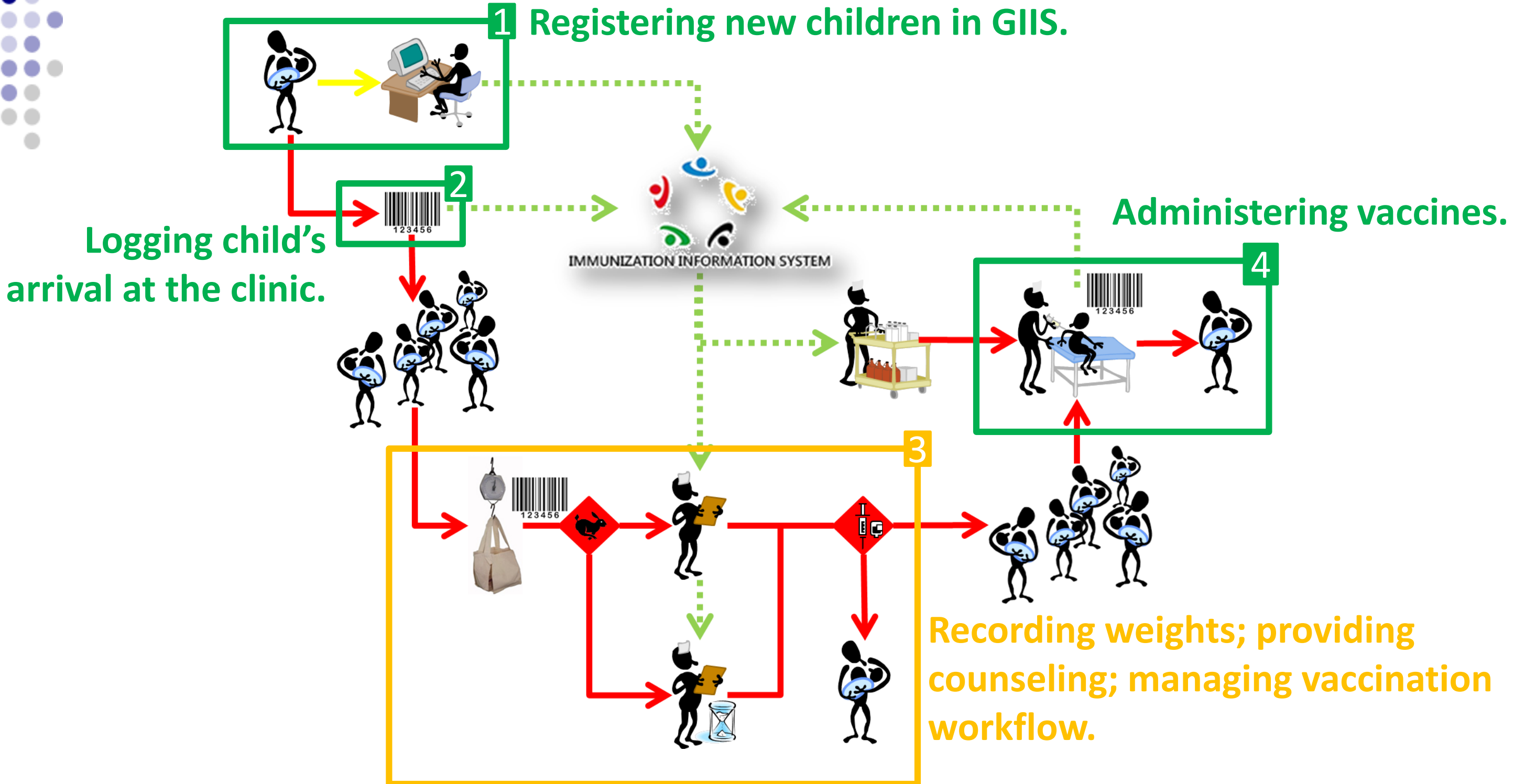


**What is BID's  
core workflow?**



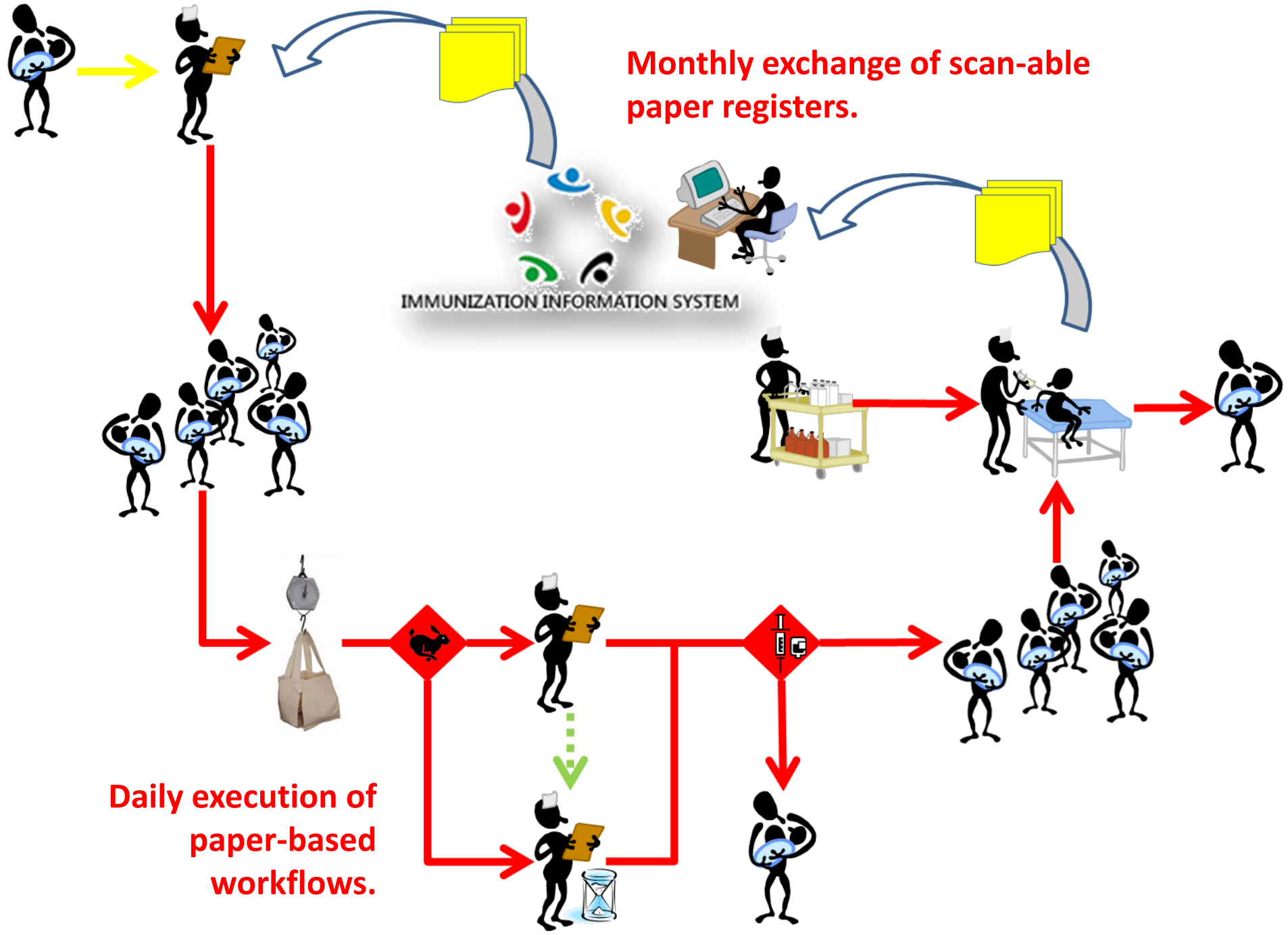
~10% of clinics, ~50% of immunizations







~90% of clinics, ~50% of immunizations



Monthly exchange of scan-able paper registers.

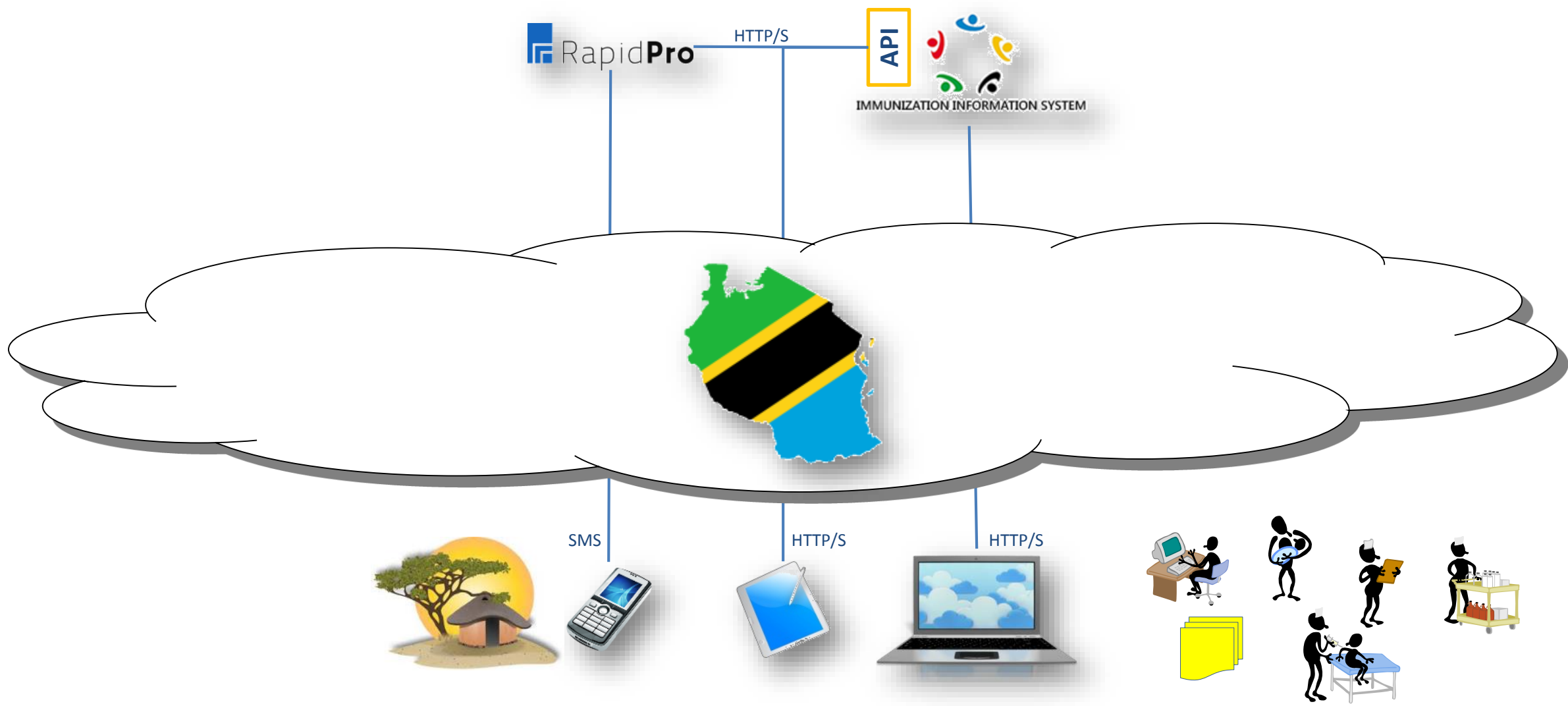
IMMUNIZATION INFORMATION SYSTEM

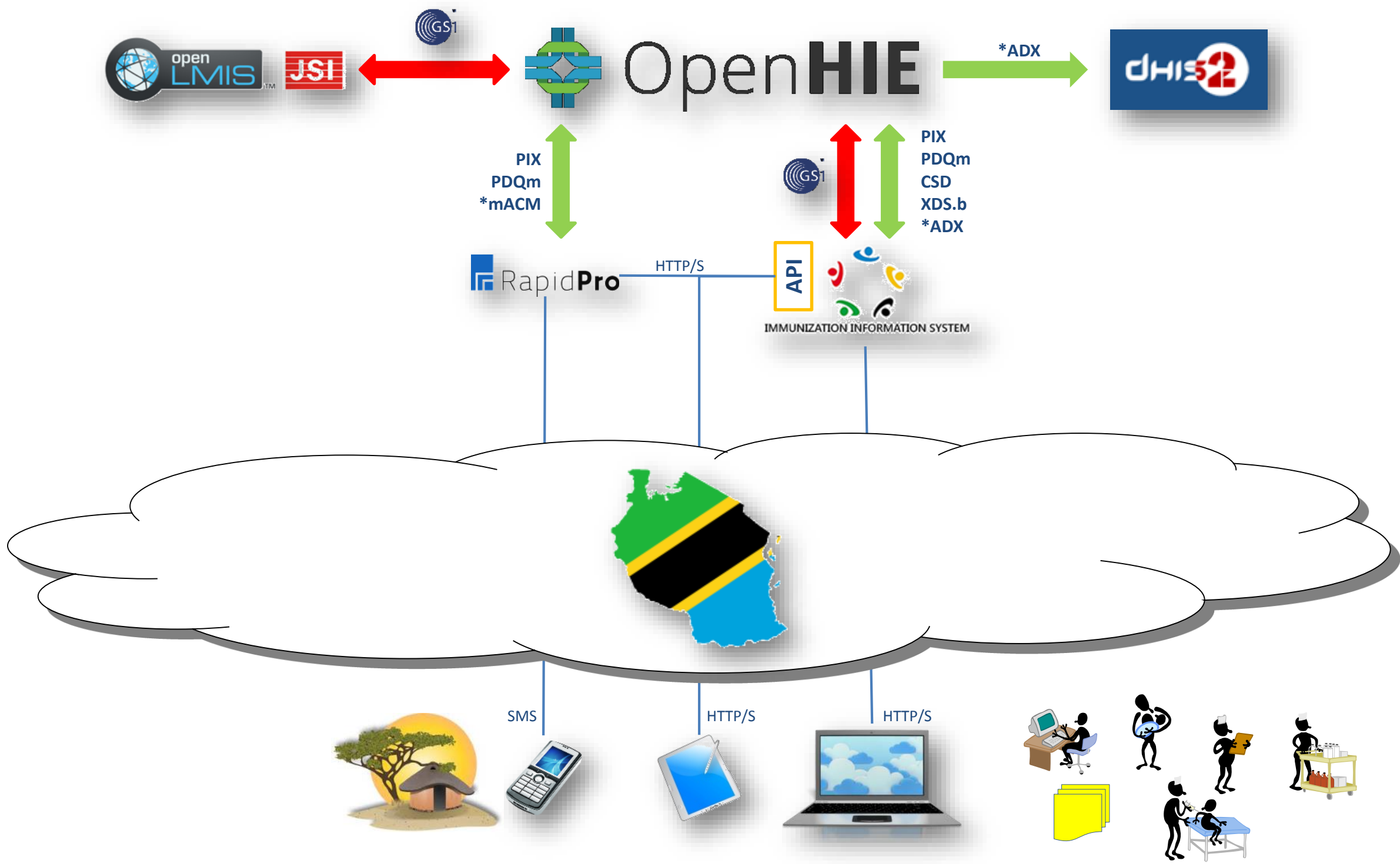
Daily execution of paper-based workflows.



**What is the ICT  
architecture for  
BID TZ?**











# What's next for BID?

- ❑ Over the course of 2015, roll out to 260+ clinics in Arusha Region and update to v2 of TIIS software
- ❑ Evolve the immunization software functionality; roll out nationally in 2016+ (6600 clinics)
- ❑ Opportunistically leverage OpenHIE to support other care workflows (e.g. HIV, MNCH, IMCI, strengthened primary care...)



# What's next for OpenHIE?

- ❑ Adopt the new IHE profiles: ADX & mACM
- ❑ Leverage results from a collaborative research with CDC regarding integrated care pathways (ICPs)
- ❑ Operationalize lessons from the field regarding implementation science and system maintenance
- ❑ Implement in 51 PEPFAR countries (DATIM project)
- ❑ Align with global UHC initiatives



This story is about Mosa...



This story is about Mosa... and her children...



This story is about Mosa... and her children... and her village... and her country...



This story is about Mosa... and her children... and her village... and her country... and how what we do can make a difference in their lives.



Thank  
You!

