

# The Nursing Role in Next Generation Models of eHealth: An Irish Perspective

Dr. Pamela Hussey, Dublin City University



# This Presentation



- **Reports health and social care is at the edge of an emerging paradigm for care delivery.**
- **It presents examples of tactical nursing activity demonstrating specific contributions regional national and EU levels**

# Competing Paradigms –

**The responsibility of the patient for self care has to be recognised, affirmed, nurtured and facilitated (McEvoy P. 2014)**

**People Centred Health Services demand a paradigm shift in the way services are funded managed and delivered (WHO, 2015)**



"Do you solemnly swear to listen to my advice?"

# Transformation is an emotional process

## Three exemplars

1. A use case on discharge delivery mechanisms and emerging nursing roles
2. National resources for advancing informatics competencies
3. Delivery clinical practice guidelines in EU projects on ePrescribing



# Patient centric - nursing engagement



**In 2008 the WHO argued that the medical model was failing to deliver affordable accessible and equitable health, but rather fragmenting healthcare and could be linked with strong commercial undertones (WHO, 2008)**

**Today this is unchanged, except the demographic profile of older adults and prevalence of multi-morbidity continues to rise. Services need to be organised around the health needs and expectations of people rather than diseases (WHO, 2015)**

# eHealth Ireland – Planned

1. *eHealth Ireland Strategy Launched in December 2013*  
<http://www.hse.ie/eng/about/Who/OoCIO/ehealthstrategy.pdf>
2. *Office of the Chief Information Officer January 2015*  
<http://www.hse.ie/eng/about/Who/OoCIO/>
3. Main objectives for 2015
  - IHI Rollout (Health Information Bill and IHI)
  - National referral system
  - New National Children's Hospital
  - EHR phase one
  - Cancer care service delivery
  - Primary care health and social care information technology infrastructure
  - Guiding the decision making process is patient benefit and needs (as opposed to technology)
  - Establishment of a health information and knowledge framework.





# Regional Use Case Discharge Planning

- **Five distinct nursing roles are identified in this Use Case Scenario;**
  - **Community Interventions Team Nurse,**
  - **Partnership Nurse,**
  - **Community Liaison Nurse/Clinical Case Manager,**
  - **Clinical Nurse Manager 3 and the**
  - **Advanced Nurse Practitioner Role**

**Full Report Available to download from:**

**[http://doras.dcu.ie/19996/1/Final\\_PARTNERS\\_Report\\_170614.pdf](http://doras.dcu.ie/19996/1/Final_PARTNERS_Report_170614.pdf)**



# Makes Evident



- **Complexity of inter-agency communication highlighting the dual role**

- As independent practitioner
- As a key worker in a co-ordinated multi-disciplinary team





Joe Brown is a 78 year old single man who lives alone. He is not known to Public Health Nurse and is not in receipt of any community supports. He has a medical history of chronic obstructive pulmonary disease (COPD).

**Day 1: Joe Brown presents to Accident and Emergency Department (A&E) with a history of being unwell x 5 days with deteriorating condition**

Known COPD diagnosed with chest infection and required IV antibiotics initiated in A&E. referred to Out Patient Anti-biotic Team (OPAT), CIT Nurse Initial Review Antibiotic 1<sup>st</sup> dose is initiated by A&E Dr, prescription given to the nurse and Joe is transferred home

Information Flow – Discharge Pathway Documented Plan, Prescription management, Referral Documentation, Next of Kin Contact with Appointment Schedule Date and to co-ordinate travel arrangements to home environment, CIT Assessment Initiated

**Day 3: OPAT Refers Joe to CIT (1) for IV antibiotic home therapy**

IV antibiotics administered over 5 days at home by CIT service. Follow up in outpatients by hospital team arranged with OPAT team.

Education and advice given by CIT nurse to Joe on the management and correct use of his inhalers. Joe discharged from CIT service and report sent to General Practitioner, Referring OPAT team and Public Health Nurse to alert of recent episode.

Information Flow – First Assessment Completed, Care Plan – Key areas included education of medical devices, symptom management fatigue breathlessness, Summary Reports 1..\*

**Day 21: Joe visits his GP – history of dizziness. GP refers Joe Brown to Partnership Nurse (PN) (2) for Blood Pressure monitor to out rule postural hypotension and for home assessment prior to Geriatrician outpatient appointment**

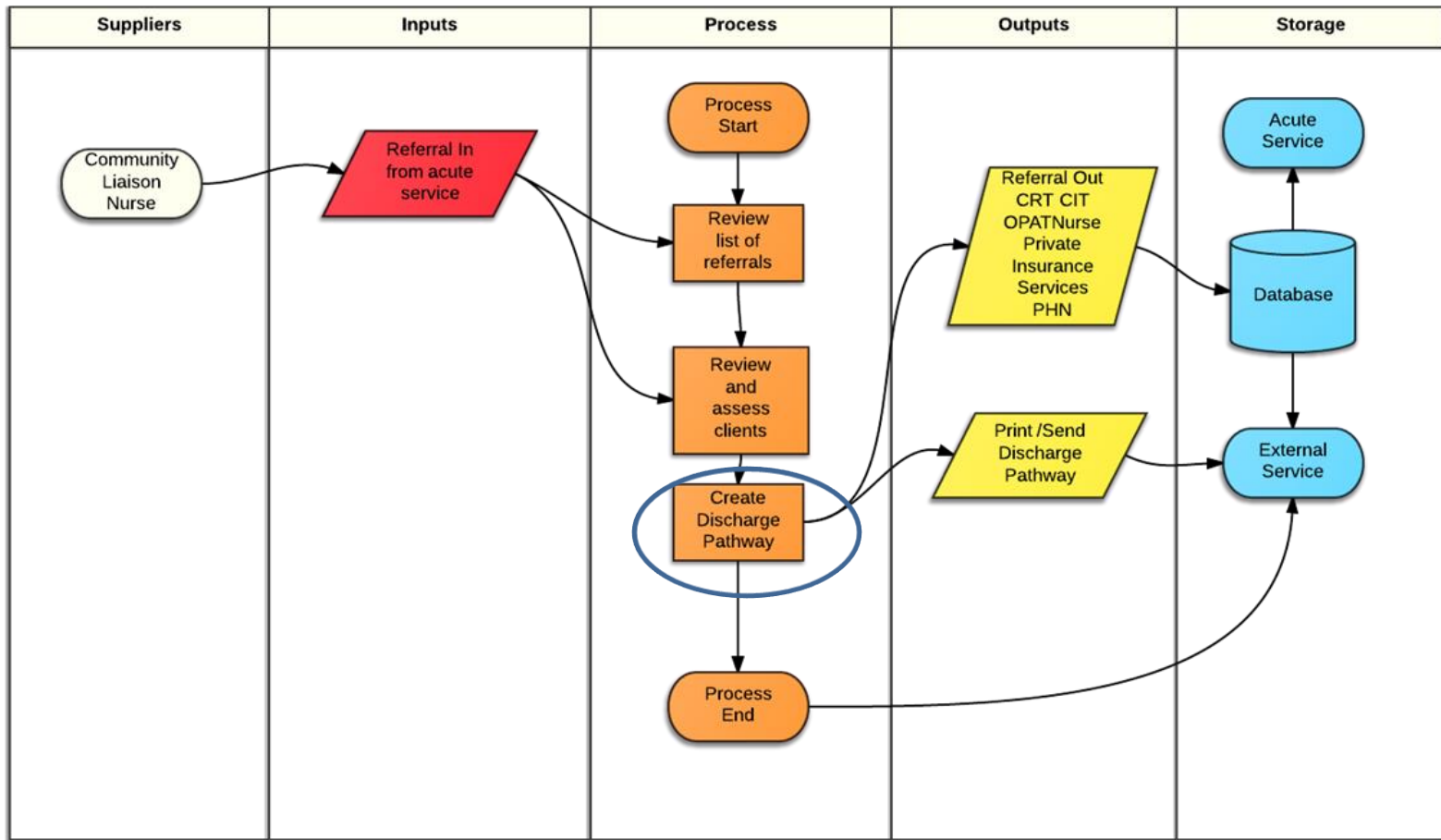
Dizziness on three separate occasions reported and one incident in which Joe nearly fell. Partnership Nurse contacted Joe and home visit arranged.

# Some Examples of Findings

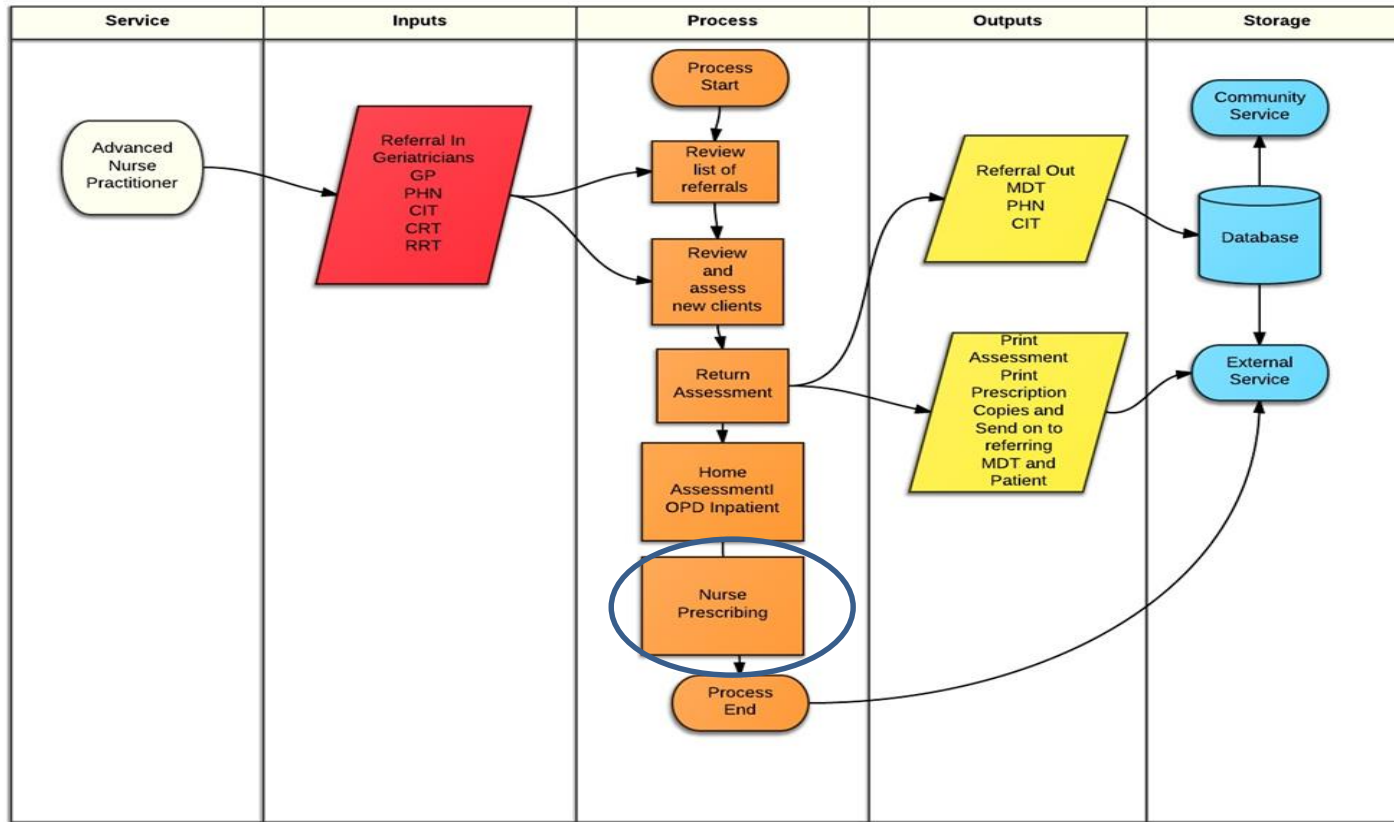
- **Subtle differences between service providers that emerging nursing roles offer need to be highlighted and core data concepts included in future subject area models of care**



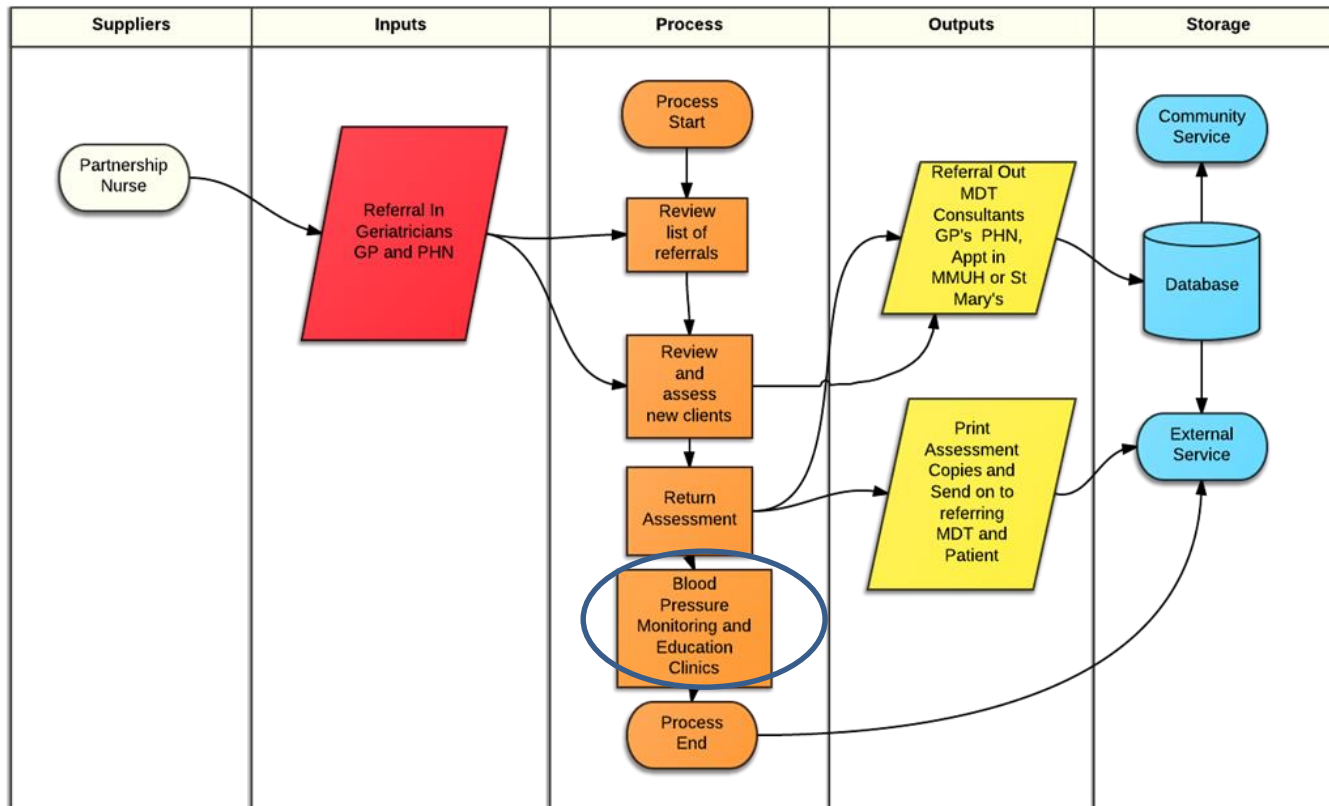
# Community Liaison Nurse



# ANP Role



# Partnership Role



# National Informatics Approach - HISINM

**Building on reports completed in 2009 this action research approach is working well in Ireland building communities of practice and empowering nurses to innovate and contribute to strategic objectives**





# Introducing HISINM

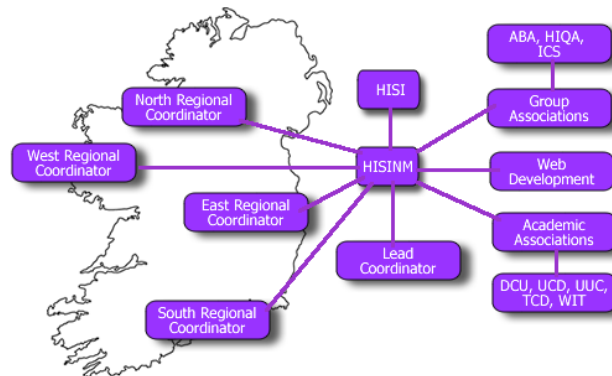


Health Informatics Society of Ireland - Nurses & Midwives Group

[Home](#) [About](#) [News](#) [Contact](#) [Resources](#) [Join](#)

## HISI-NM Group Structure

The HISINM group is part of HISI. HISINM is headed up by a Lead Coordinator along with 4 Regional Coordinators. We communicate, link and collaborate with national, professional, government and academic organisations and institutions.



### HISI-NM MEMBERS SIGN IN

Log in through the HISI members page.



Not a member of HISI-NM? [Join now »](#)

### #ehealth

**Deloitte** Deloitte EU services @DeloitteEU 5 May  
MT @DigitalAgendaEU: Next week is #eHW15. 10 things you shouldn't miss [ow.ly/Mtwz3](http://ow.ly/Mtwz3) #ehealth #mhealth [pic.twitter.com/LKRzECwtuT](http://pic.twitter.com/LKRzECwtuT)  
Retweeted by goal4.org



# Examples of ANP Educational initiatives

- <http://www.happybones.ie/>
- <http://www.bonehealth.co/>



# ENS4Care

## *Evidence Based Guidelines for Nursing and Social Care on eHealth Services*

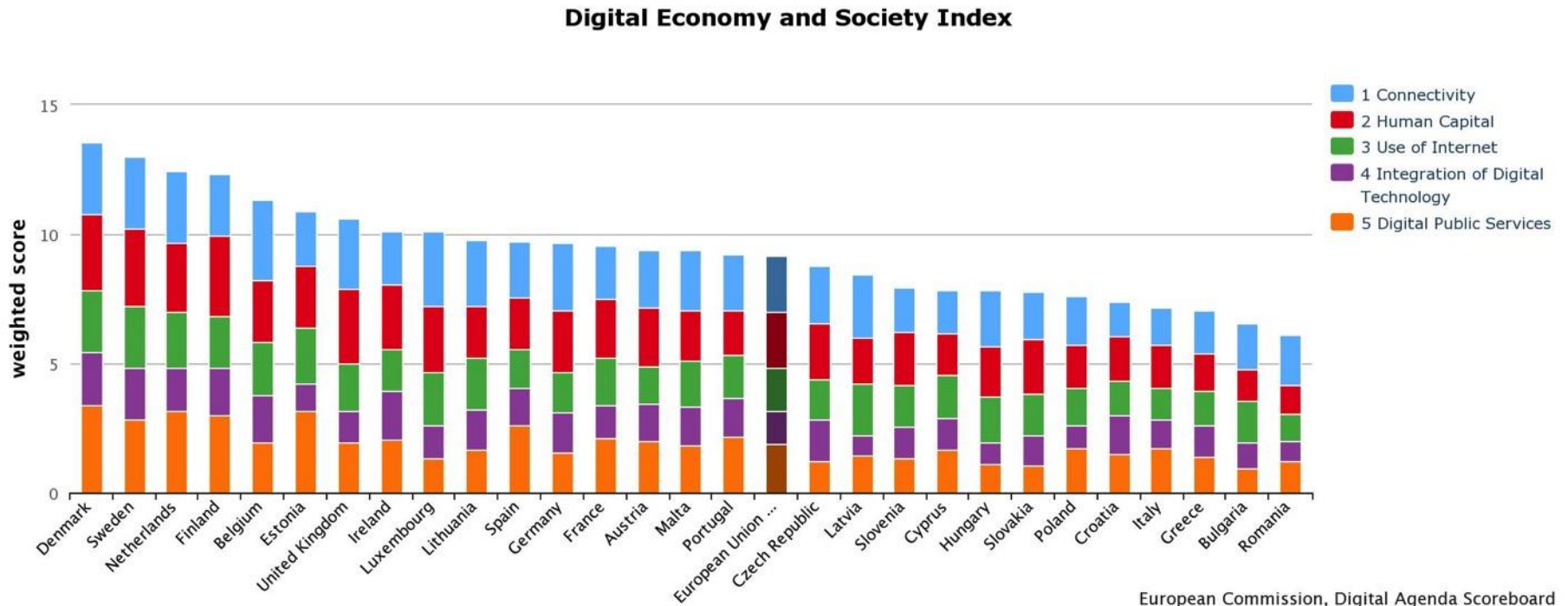
*Thematic Network  
CIP-ICT-PSP 7 – 2013*

<http://www.ens4care.eu/>

*PI Dr Paul de Raeve*

# EU Background

- **DESI Digital Economy and Society Index**

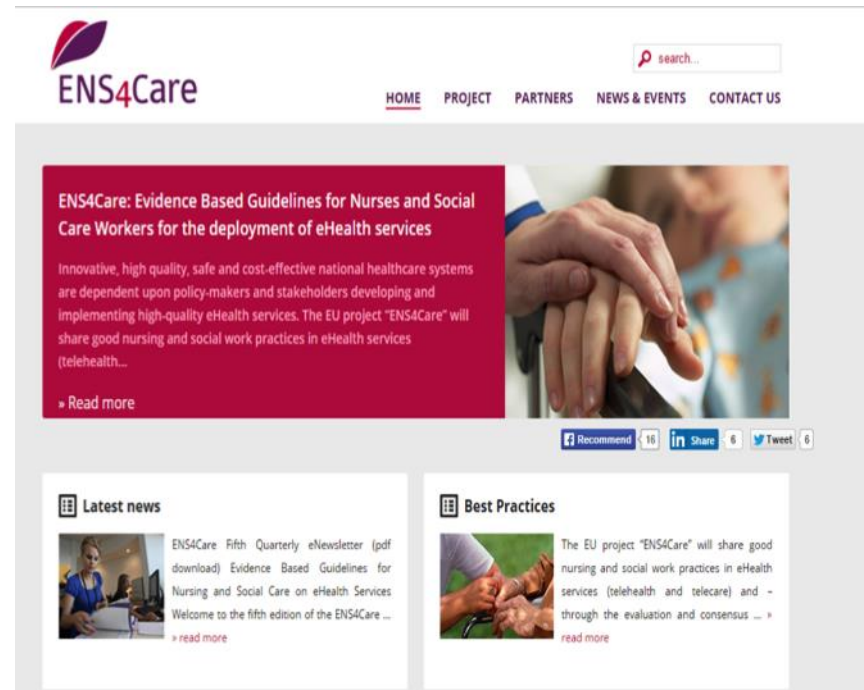


<http://ec.europa.eu/digital-agenda/en/digital-economy-and-society-index-desi>

# ENS4Care

5 work packages on evidence based practices for eHealth Services

1. Prevention
2. Clinical Practice
3. Advanced Roles
4. Integrated Care
5. Nurse ePrescribing



The screenshot shows the ENS4Care website homepage. At the top left is the ENS4Care logo, which consists of a stylized leaf icon and the text "ENS4Care". To the right of the logo is a search bar with the placeholder text "search...". Below the logo and search bar is a navigation menu with the following items: [HOME](#), [PROJECT](#), [PARTNERS](#), [NEWS & EVENTS](#), and [CONTACT US](#).

The main content area features a large red banner with the following text: "ENS4Care: Evidence Based Guidelines for Nurses and Social Care Workers for the deployment of eHealth services". Below this title is a paragraph: "Innovative, high quality, safe and cost-effective national healthcare systems are dependent upon policy-makers and stakeholders developing and implementing high-quality eHealth services. The EU project 'ENS4Care' will share good nursing and social work practices in eHealth services (telehealth...". A "Read more" link is located at the bottom left of the banner. To the right of the banner is a photograph of a person's hands being held by another person's hands.

Below the banner are two social media sharing buttons: "Recommend" (with a count of 16) and "Share" (with a count of 6). To the right of these buttons is a "Tweet" button (with a count of 0).

The page also features two columns of content below the banner:

- Latest news:** A section with a small image of a person in a blue uniform. The text reads: "ENS4Care: Fifth Quarterly eNewsletter (pdf download) Evidence Based Guidelines for Nursing and Social Care on eHealth Services Welcome to the fifth edition of the ENS4Care ...". A "read more" link is at the bottom.
- Best Practices:** A section with a small image of hands being held. The text reads: "The EU project 'ENS4Care' will share good nursing and social work practices in eHealth services (telehealth and telecare) and - through the evaluation and consensus ...". A "read more" link is at the bottom.

# ENS4Care Overview

- Data were collected through a cross-sectional, online, questionnaire survey of health professionals (n=122) from 21 countries in Europe
- The final guideline documents will be available through the project website Q4 2015
- Following slides report on WP5 Nurse ePrescribing - Irish Nurses and Midwives Organisation <http://www.inmo.ie/>



# WP5 Overview- Mapping the Journey



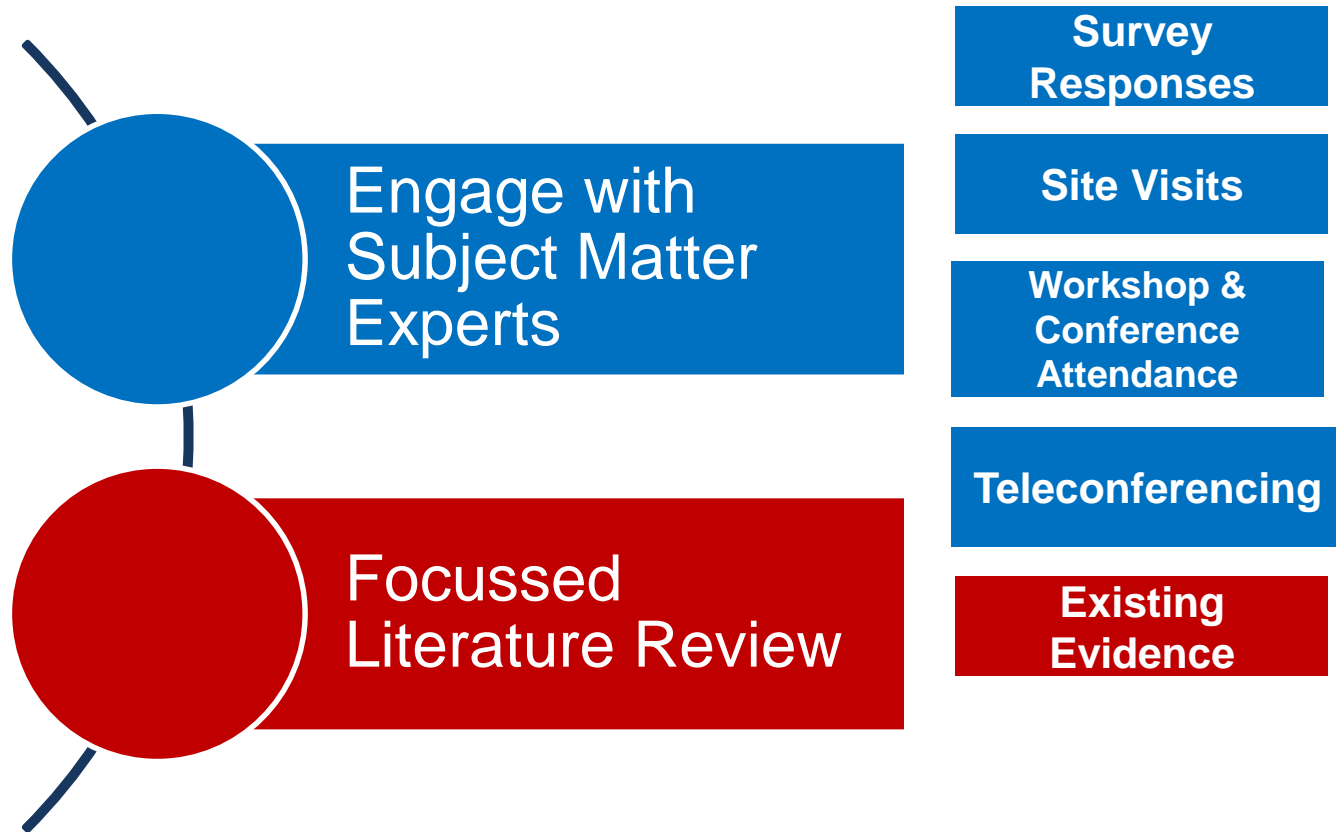
**Phase 1 –  
Development of the  
Process**

**Phase 2 – Defining  
Content & Structure**

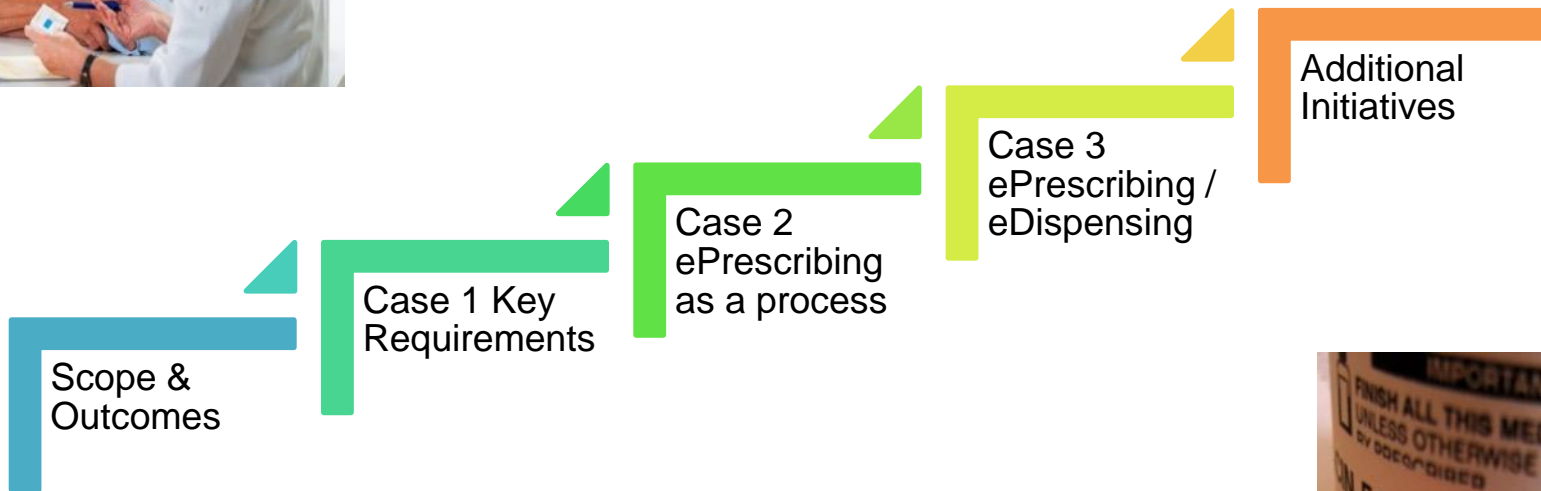
**Phase 3 – Partners  
Comments &  
Validation**



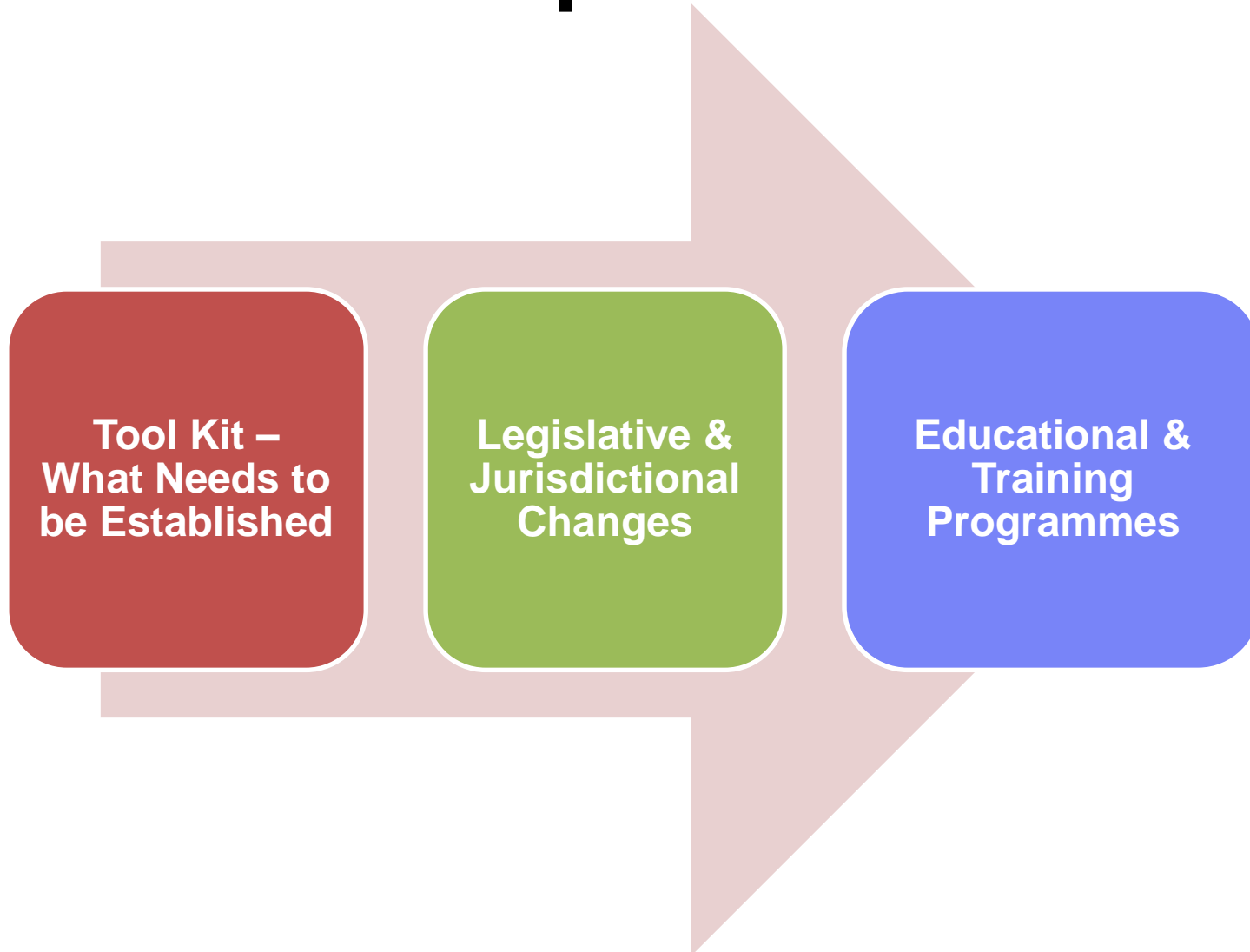
# Development of Process



# The Guideline Content

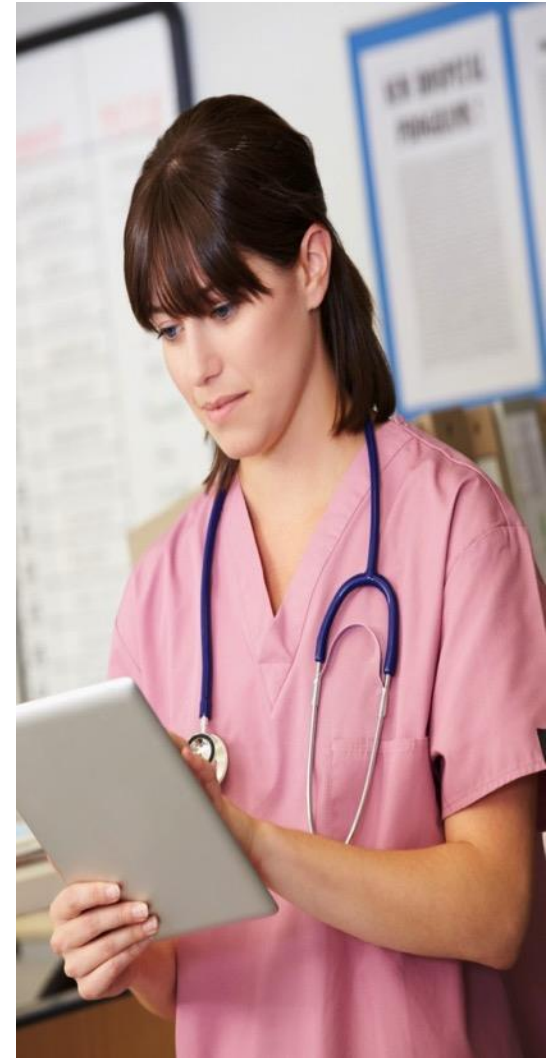


# Case 1 Defines Key Requirements

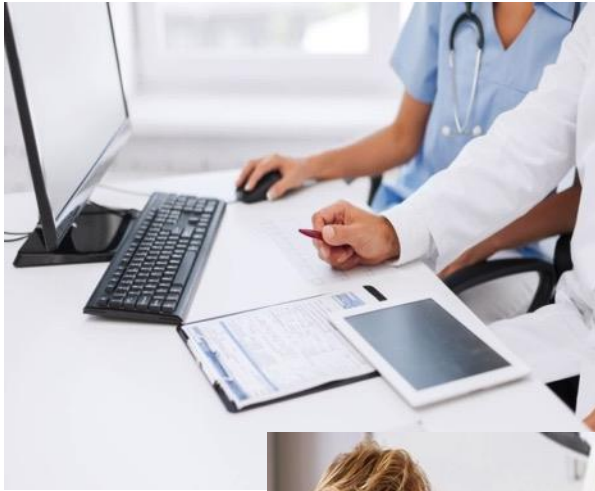


# Case 2 describes ePrescribing in Process

- Depicts governance and nursing leadership in action within MDT and community services
- Emerging models of eHealth
- Example of workarounds in context



# Case 3 ePrescribing / eDispensing



- Enterprise approach
- Cost projections
- Application of health informatics – semantic and syntactic interoperability
- Additional reading



# Additional Initiatives - Expert Panel



- Draft 1 sent on to expert panel in July comments integrated into the document in August / September
- Draft 2 submitted to ENS4Care Team for Comment and Evaluation
- Draft 3 validation and comments from partners blind review

# Example of Guideline Statements

- Jurisdictional factors and prescriptive authorities should be considered in the initial stages of planning for nurse ePrescribing
- Informatics infrastructure and platform should be considered in the initial stages of planning for nurse ePrescribing
- Competency in clinical decision-making should be considered in the initial stages of planning for nurse ePrescribing.
- epSOS a core resource <http://www.epsos.eu/>

# Nursing contribution



- It is at the edges (of health care provision) that interesting things happen.
- Transformation to eHealth solutions is an emotionally charged process and nursing as a profession at local national and EU can contribute to this process for optimal patient outcome.

# Thank You



Pamela Hussey – [pamela.hussey@dcu.ie](mailto:pamela.hussey@dcu.ie) [www.pamelahussey.ie](http://www.pamelahussey.ie)

# Some References

- Hussey P, and Rodger D, PARTNERS Report [Online]  
Available from  
[http://doras.dcu.ie/19996/1/Final PARTNERS Report 170614.pdf](http://doras.dcu.ie/19996/1/Final_PARTNERS_Report_170614.pdf).
- Larsen P, Lubkin I. *Chronic Illness impact and interventions* . 7th ed, Sudbury M.A: Jones & Bartlett New York 2009
- McEvoy P, *Chronic Disease Management* Radcliffe Publishing London 2014
- World Health Organisation Global Strategy on people centred and integrated health services Interim Report 2015 WHO/HIS/SDS/2015.6